

2018

CATALOGUE

Cable Tray

Gi Trunking

Gi Lintel

C-Channel 41x41

Wall Ties

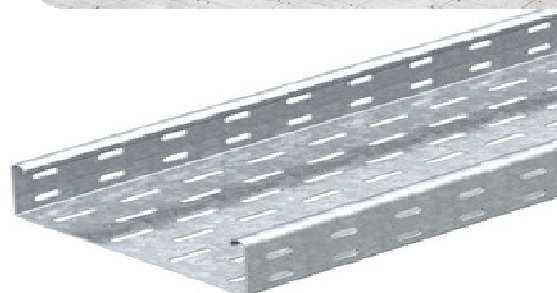
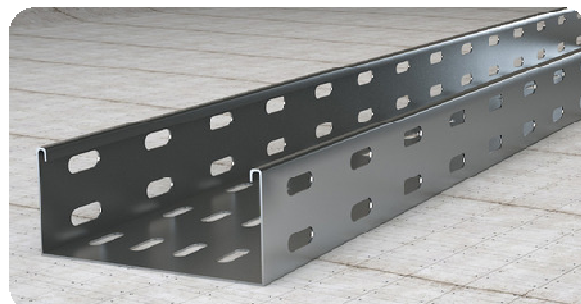
AL SAMEER ENGINEERING LLC

Cable Tray & Accessories

Heavy duty, medium duty & light duty, GRP

Finish: HDG, SS, epoxy coated.

width 50mm To 900mm

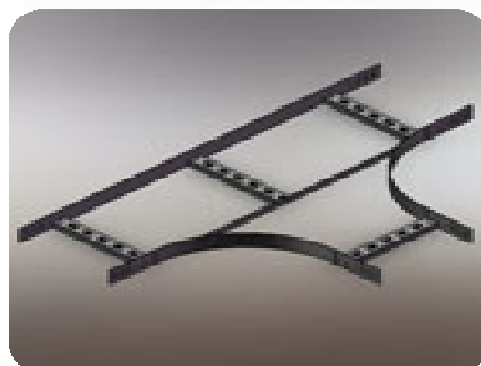
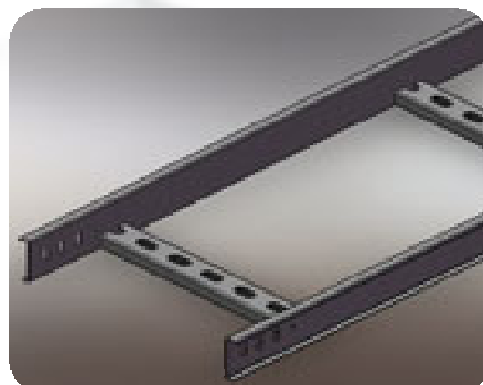


Cable Ladder & Accessories

Finish: HDG, SS, epoxy coated, GRP

width 75 mm To 1100 mm.

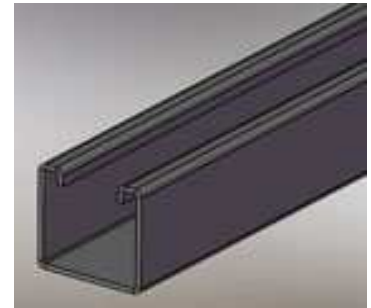
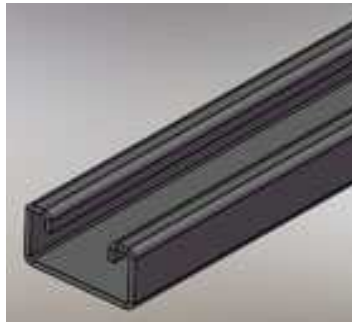
side rails height 75 mm, 100 mm, 150 mm.



Cable Support Systems

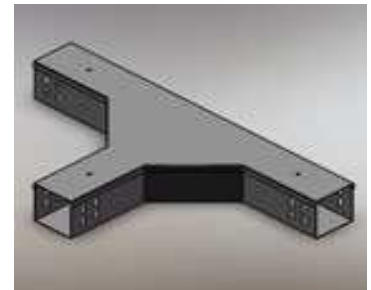
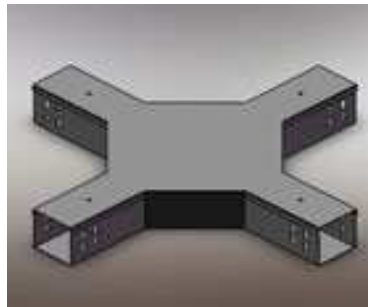
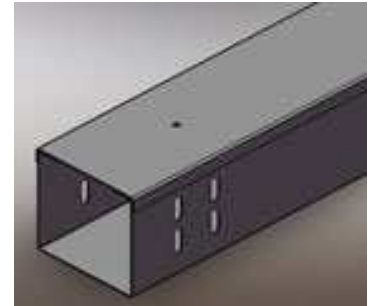
Cable Tray Supports

- 1) Strut channels
- 2) Cantiliver arms
- 3) Post base
- 4) Hold down clamps



GI Trunking System

- 1) Under floor trunking
- 2) Raised floor trunking
- 3) Flush floor trunking
- 4) Floor boxes



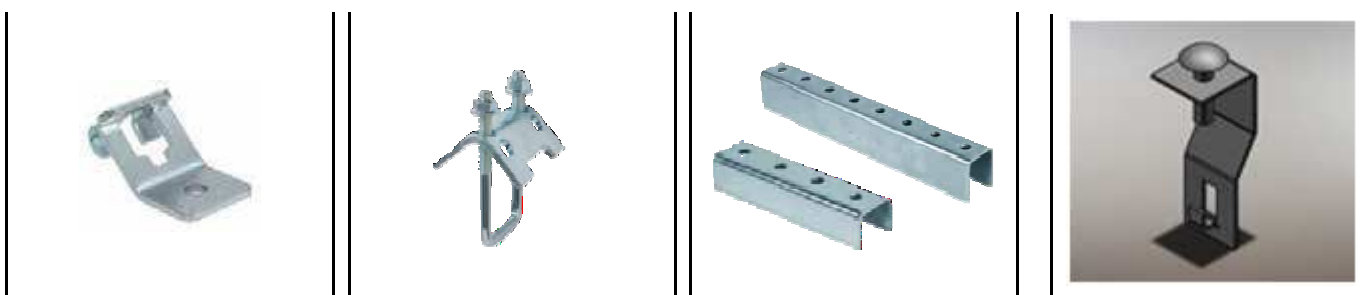
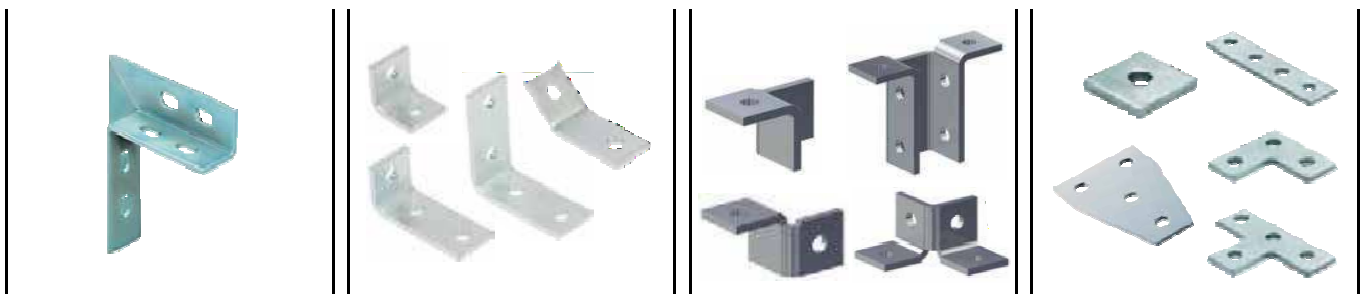
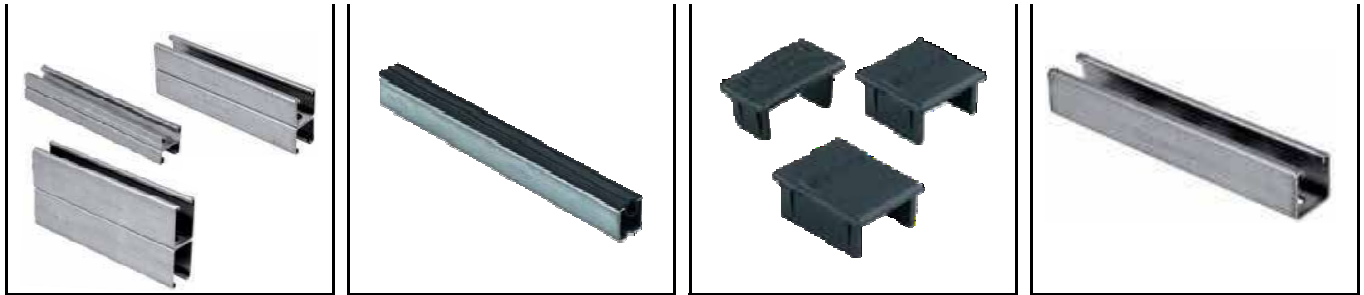
Basket Tray/Wire Mesh Tray

width: 100 mm To 600 mm.



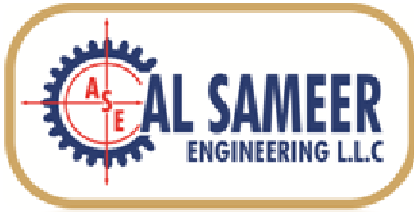


MEP Supports & Accessories



Supports & Accessories





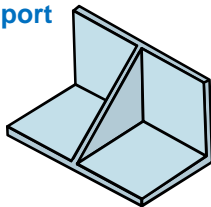
Expanded Mesh & Metal Products

Lintel

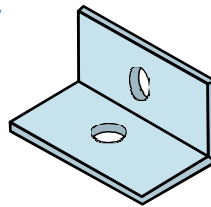
Wall Ties

TMI Wall Ties anchor plates are used to attach structural members or equipment to concrete structure. Plates and angles can also be used to frame openings in concrete walls or as shelf angles. They are used with precast or cast in place concrete

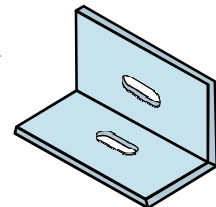
Anchor with support



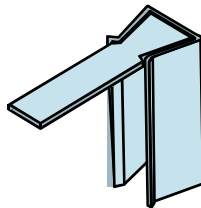
Two sided screw punch anchor



Two sided slot anchor horizontal



Dove tail with triangular channel



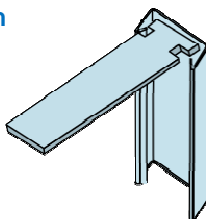
Ocht channel with plain tie special



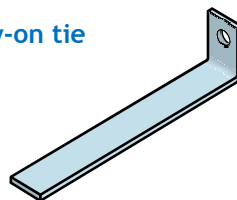
Ocht channel with triangular wire tie



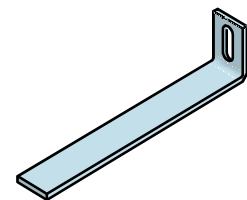
Dove tail with rectangular channel



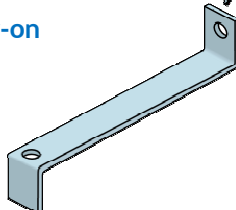
L-plain bolt/screw-on tie



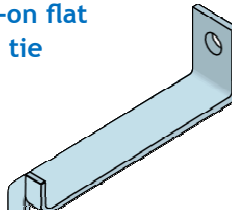
L-plain slot tie



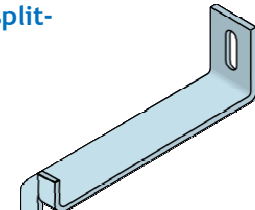
Z-plain tie bolt/screw-on



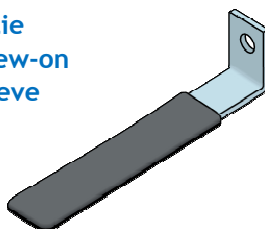
Bolt screw-on flat split-bend tie



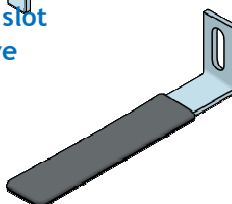
Slot flat split-bend tie



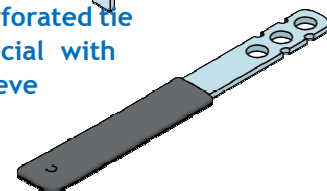
L-plain tie bolt/screw-on with sleeve



L-plain tie slot with sleeve

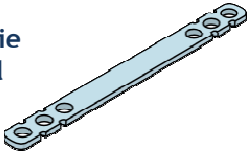


Perforated tie special with sleeve

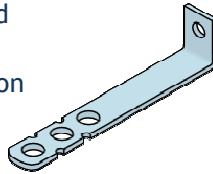


Wall Ties

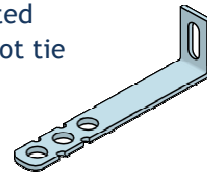
Plain tie
special



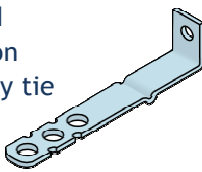
L-perforated
special tie
bolt/screw-on



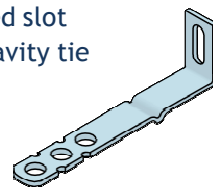
L-perforated
special slot tie



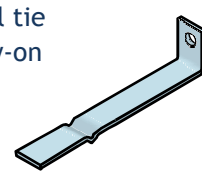
L-perforated
bolt/screw-on
special cavity tie



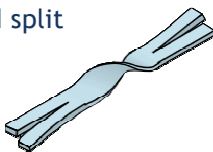
perforated slot
special cavity tie



Cavity wall tie
bolt/screw-on



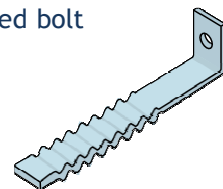
Two sided split
twist tie



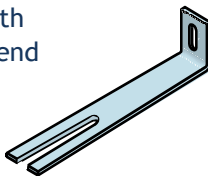
Flat two sided
split end cavity
wall tie



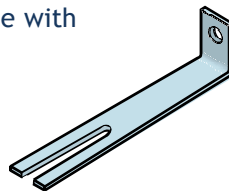
Corrugated bolt
wall ties



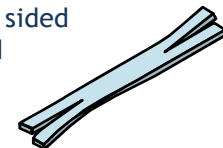
L-slot tie with
with u-cut end



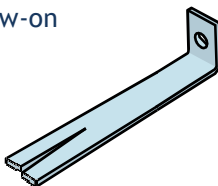
L-bolt tie with
cut end



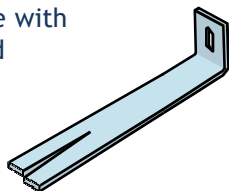
Flat two sided
split-end



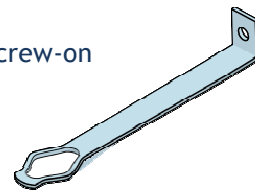
L-bolt/screw-on
split-end



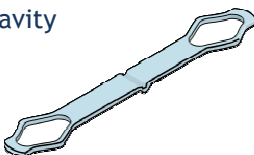
L-slot tie with
split-end



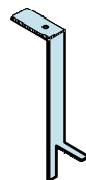
L-bolt screw-on
safety



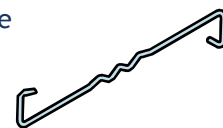
Safety cavity
tie



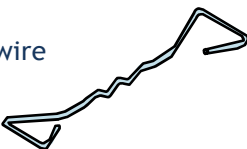
Ceiling wall strap
tie



Z wire tie



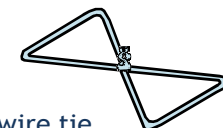
Double triangle wire
tie double drip



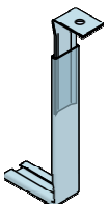
Z-shape wire tie



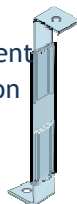
Butterfly wire tie



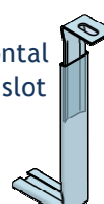
Vertical movement tie
Bolt
screw-on



Vertical movement
tie Bolt screw-on



Vertical horizontal
movement tie slot



VHM-ST2
Vertical
horizontal
movement
tie Slot

