

13 Al Sameer Group Company Profile

www.alsameereng.com

YEARS OF
EXPERIENCE





- Innovative Design.
- Capacity from 1.5 to 4 KW.
- Life cut table dimension from 1500 mm to 3000 mm.
- User CYPCUT Software
- Excellent price/performance ratio.
- Low energy consumption.
- Low running costs.
- High accuracy.
- Easy Set-up



INTRODUCTION

With more than 12 years of experience and expertise, AL SAMEER ENGINEERING LLC has succeeded in becoming one of the leading multidisciplinary engineering companies in the UAE and the Middle East. AL SAMEER ENGINEERING LLC offers comprehensive, cost-effective, and high-quality technical and engineering solutions through with unmatched reliability and outstanding value.

AL SAMEER ENGINEERING LLC Engineers are committed to continuously develop and improve our technology, resources, services, and capabilities to support businesses Transformation journey and help them meet the ever-changing.

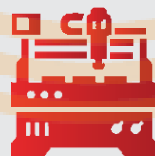


Product Development



- Designing Software
- AutoCAD-2021
- Solid Work-2019
- CORAL Draw-2019
- Laser Software 2022

Manufacture Solutions



- CNC Fiber Laser Cutting Solutions
- CNC Laser Pipe & Tube Cutting
- CNC Punching Machine
- C2 Laser Cutting Solution
- Plasma Cutting Solutions

Sheet Metal Solutions



- CNC Sheet Metal Processing Solutions
- CNC Bending Machine
- CNC Milling Solutions
- CNC Turning Solutions
- Press Brakes Solutions
- Punch Press
- Shoring Machines
- Bending Machines
- Deep Drawing Presses
- CNC Sheet Metal Tools



MAKING DIFFERENCE

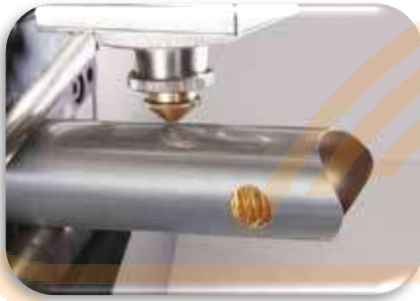
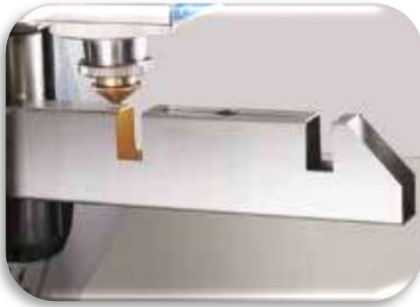


TABLE OF CONTENTS

- INTRODUCTION
- PRODUCT DEVELOPMENT SOLUTIONS
- MANUFACTURE SOLUTIONS
- SHEET METAL SOLUTIONS
- DIE MAKING TOOLS SOLUTION



Fiber Laser Cutting for Tubes and Profiles



Cutting Lengths up to 6000 mm Capacity up to O.D. 220 mm Wall thickness up to 15 mm

Capacity up to 220mm

Ferrous and Nonferrous cutting

Loading and unloading system can be equipped with the machine

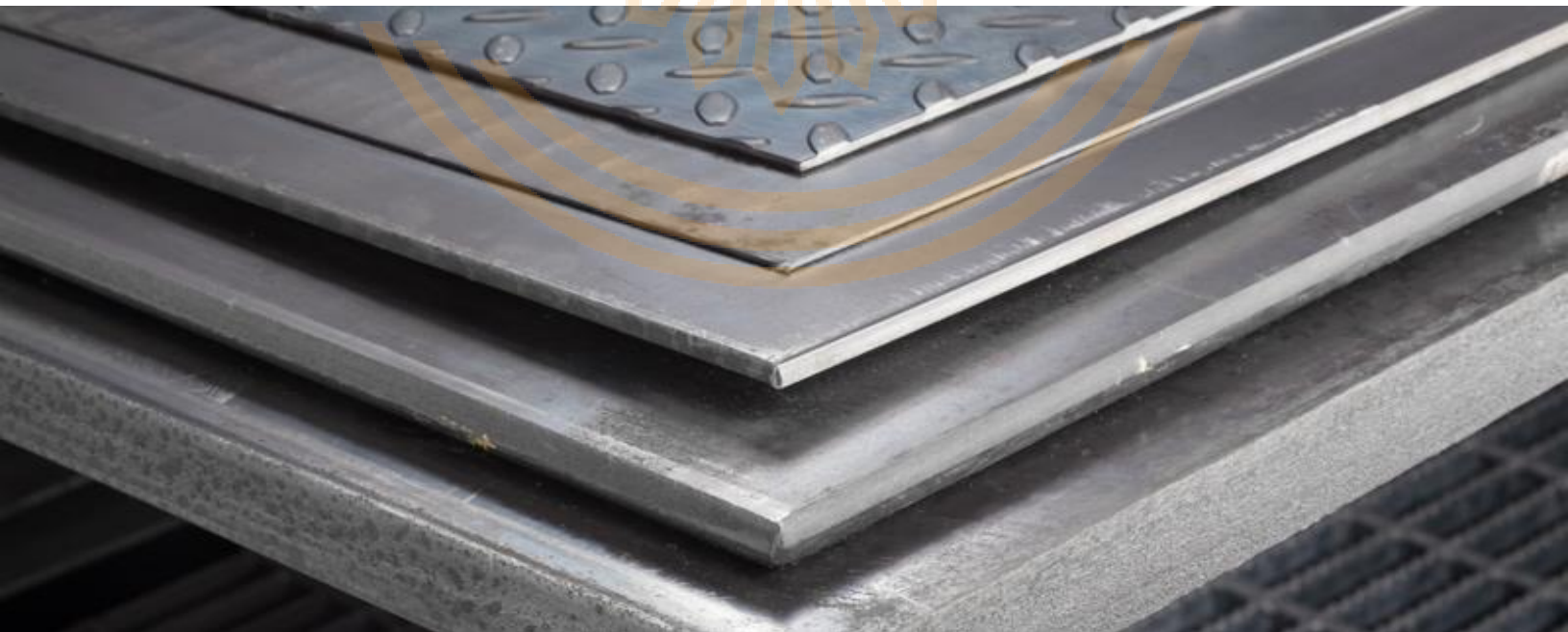
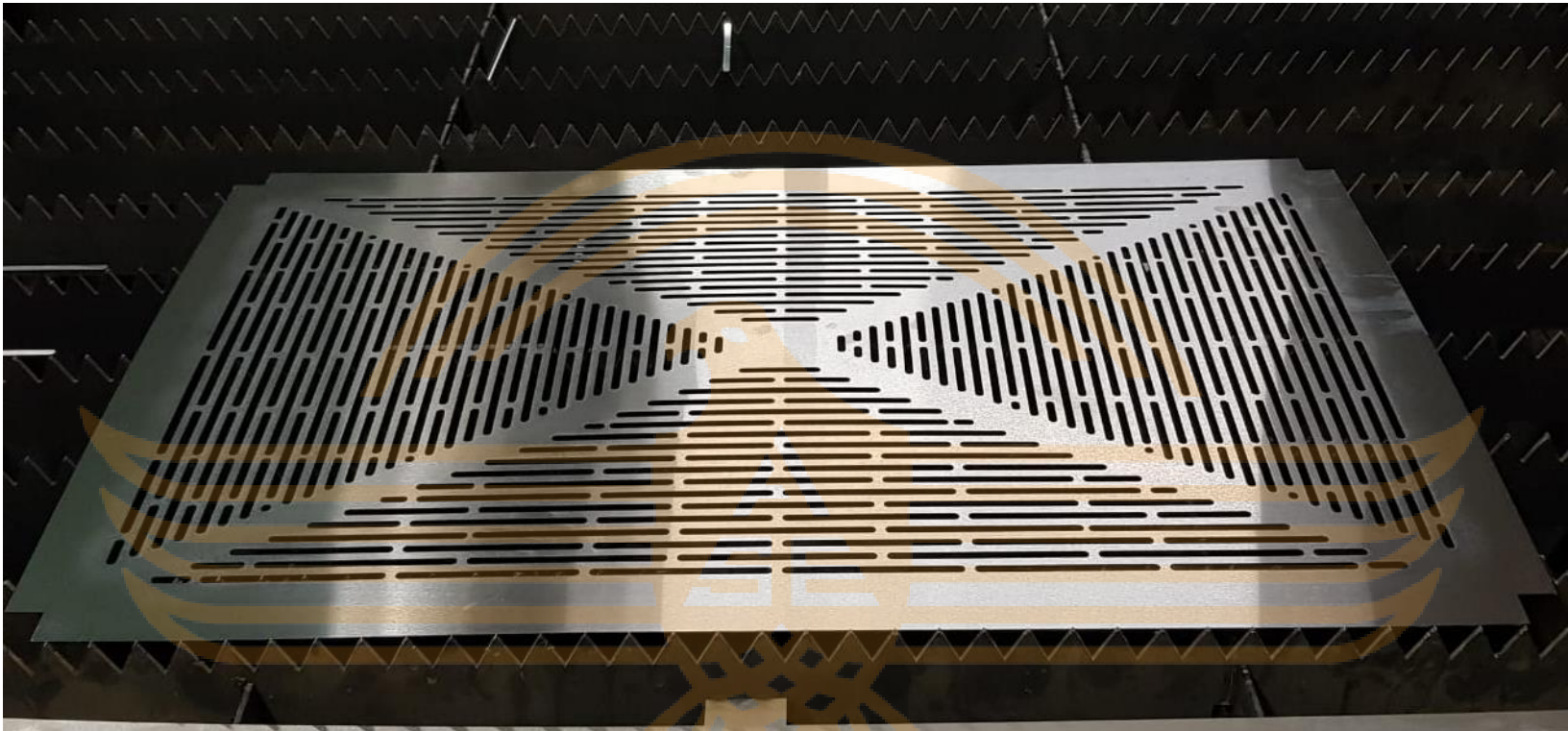




Steel

Metal

Solutions

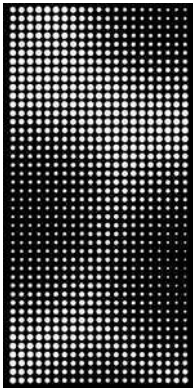




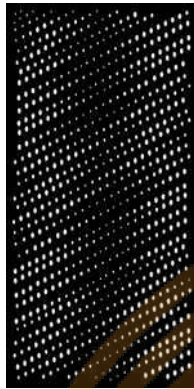
ALSAMEER

- The Laser Cut collection allows designers to seamlessly divide spaces with a reflective natural metal or a bold colorful pattern using a durable and cost effective material solution. This versatile collection has many uses – from an interior partition or feature wall to a stunning exterior facade.
- STANDARD PATTERNS
- Available in 30 standard patterns with the ability to customize the size and shape of the metal cuts to control the amount of light and flow through the space. Click on pattern names below to be taken to a detail page.

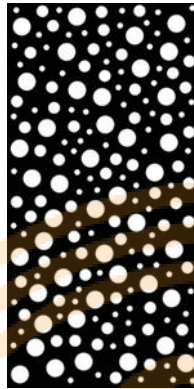
DOTS



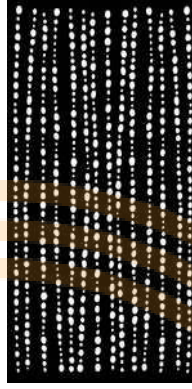
[ASE-1-Morph](#)
28% open area



[ASE-2-Ovals](#)
11% open area



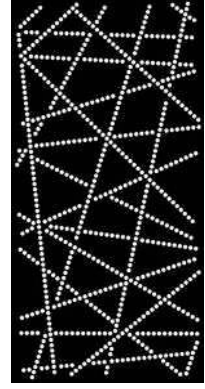
[ASE-3-Bubbles](#)
27% open area



[ASE-4-Pebbles](#)
16% open area



[ASE-5-Skyline](#)
10% open area



[ASE-6-Contrails](#)
13% open area

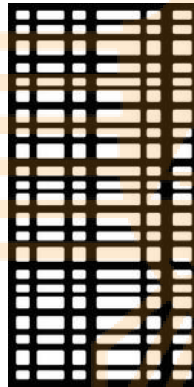
LINEAR



[ASE-7-Lines](#)
17% open area

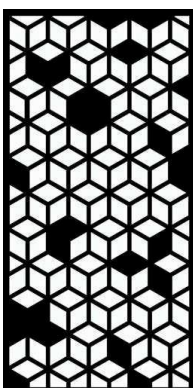


[ASE-8-Reeds](#)
16% open area



[ASE-9-Shoji](#)
43% open area

GEOMETRIC



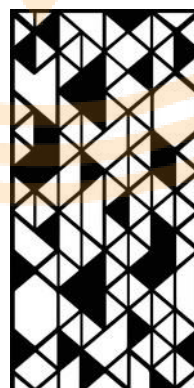
[ASE-10-Carte](#)
55% open area



[ASE-11-CrissCross](#)
34% open area



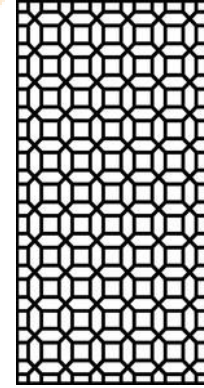
[ASE-12-Vitral](#)
59% open area



[ASE-13-Deco](#)
53% open area



[ASE-14-Metro](#)
7% open area



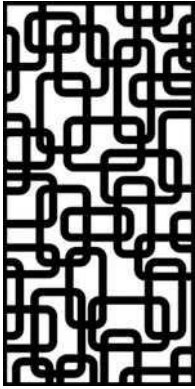
[ASE-15-Royal](#)
60% open area



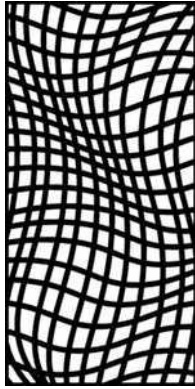


ALSAMEER

MOVEMENT



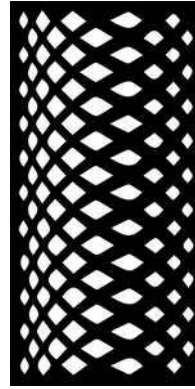
[ASE-16-Loops](#)
46% open area



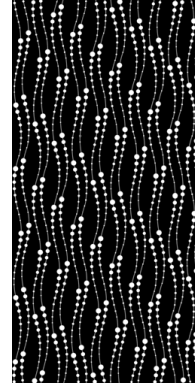
[ASE-17-Netting](#)
45% open area



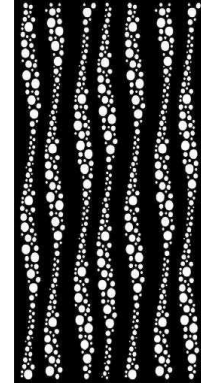
[ASE-18-Shattered](#)
41% open area



[ASE-19-Rhythm](#)
29% open area



[ASE-20-Pearls](#)
11% open area



[ASE-21-Stream](#)
17% open area

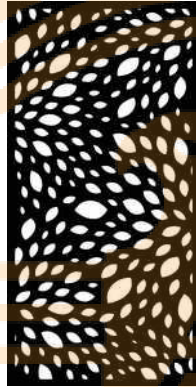
BOTANIC



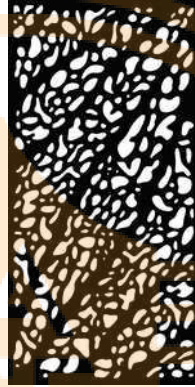
[ASE-22-Tree](#)
62% open area



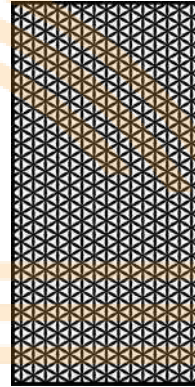
[ASE-23-Tropical](#)
20% open area



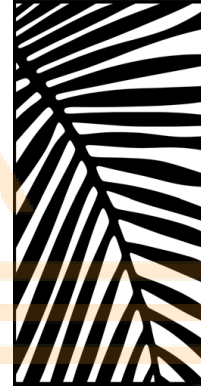
[ASE-24-Petals](#)
23% open area



[ASE-25-Vines](#)
30% open area



[ASE-26-Trinity](#)
43% open area



[ASE-27-Palm](#)
38% open area

ORGANIC



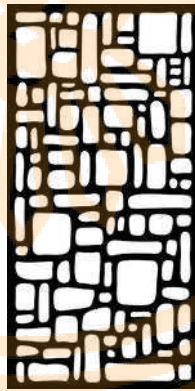
[ASE-28-Flintstones](#)
48% open area



[ASE-29-TicTac](#)
37% open area



[ASE-30-Limestone](#)
34% open area



[ASE-31-Cobblestone](#)
54% open area

Available in 4'x8' standard sheet sizes. Custom sizes available

Umm Al Quwain Emirates New Industrial Area Shed Number (1)
Mobile: +971 50 7002058 Po Box:7578 Umm Al Quwain
E-Mail info@alsameereng.com www.alsameereng.com

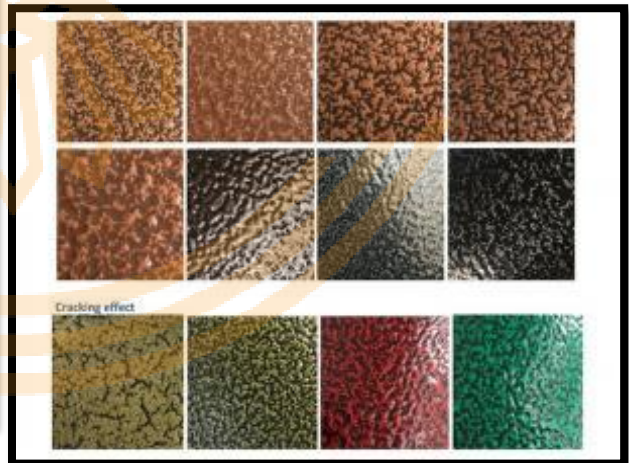
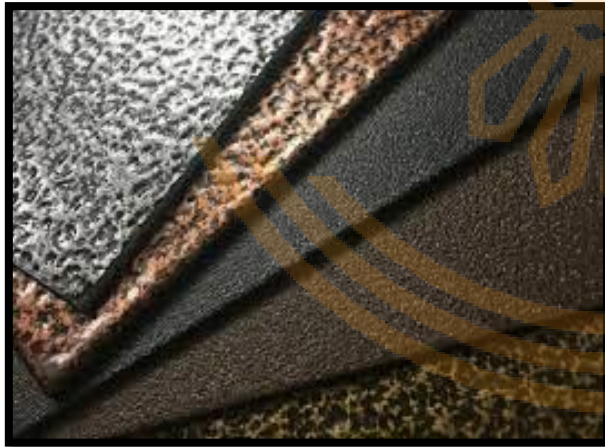
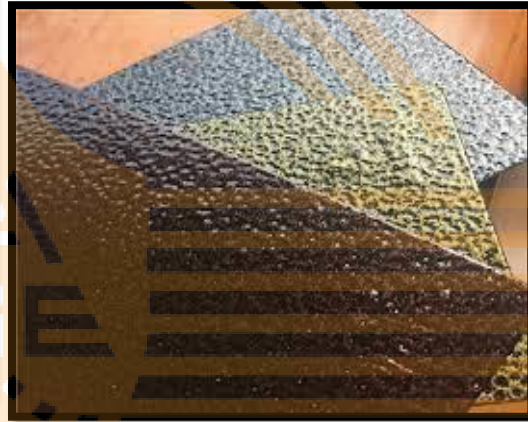
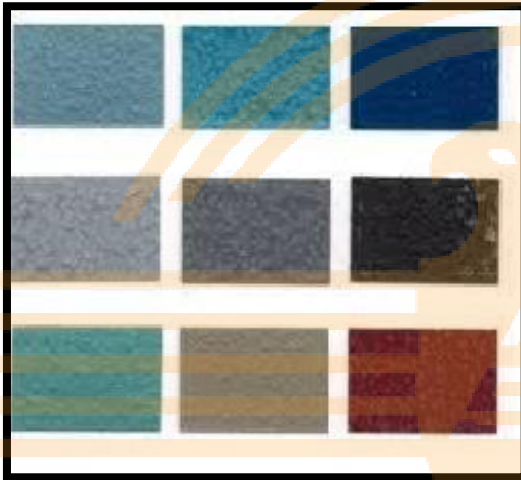


Type of Material Cutting Details

Mild Steel, Stander Steel, Gi Galvanizing, Aluminum, Bras, and Coper

STANDARD POWDER COAT FINISHES

Powder coats are suitable for interior

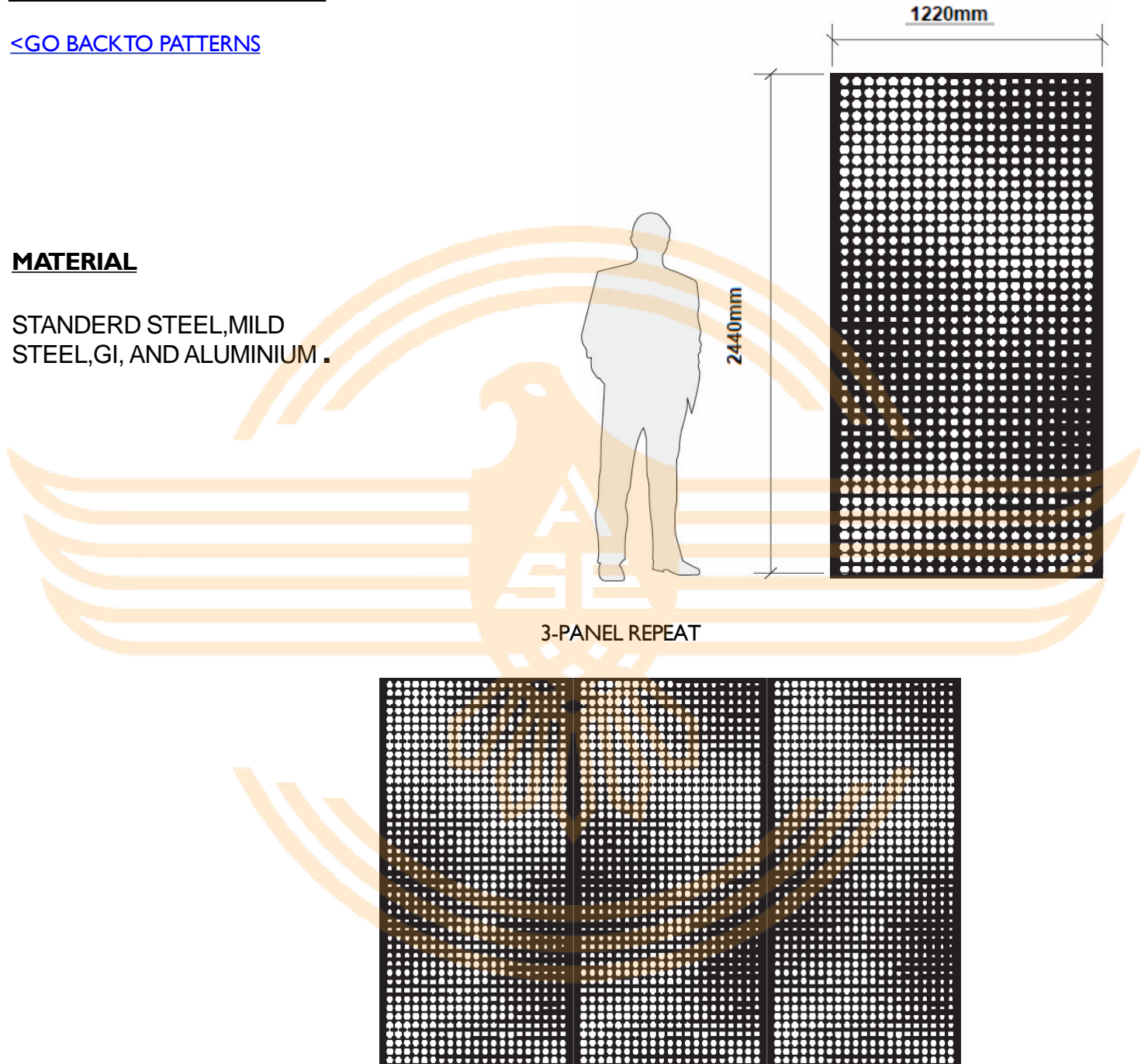


MORPH PATTERN

[<GO BACK TO PATTERNS](#)

MATERIAL

STANDERD STEEL, MILD
STEEL, GI, AND ALUMINIUM .

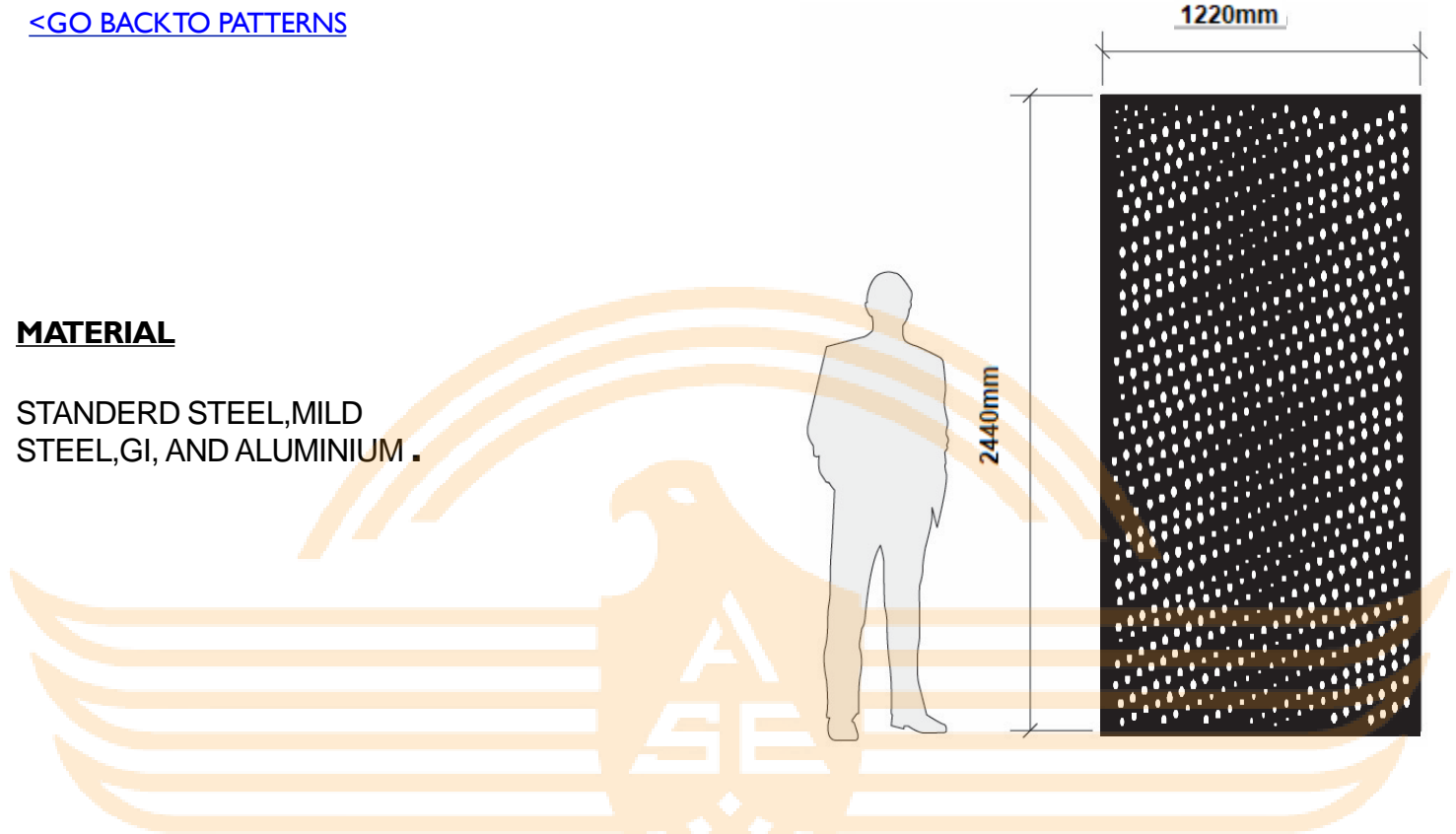


OVALS PATTERN

[<GO BACK TO PATTERNS](#)

MATERIAL

STANDERD STEEL, MILD
STEEL, GI, AND ALUMINIUM .



3-PANEL REPEAT

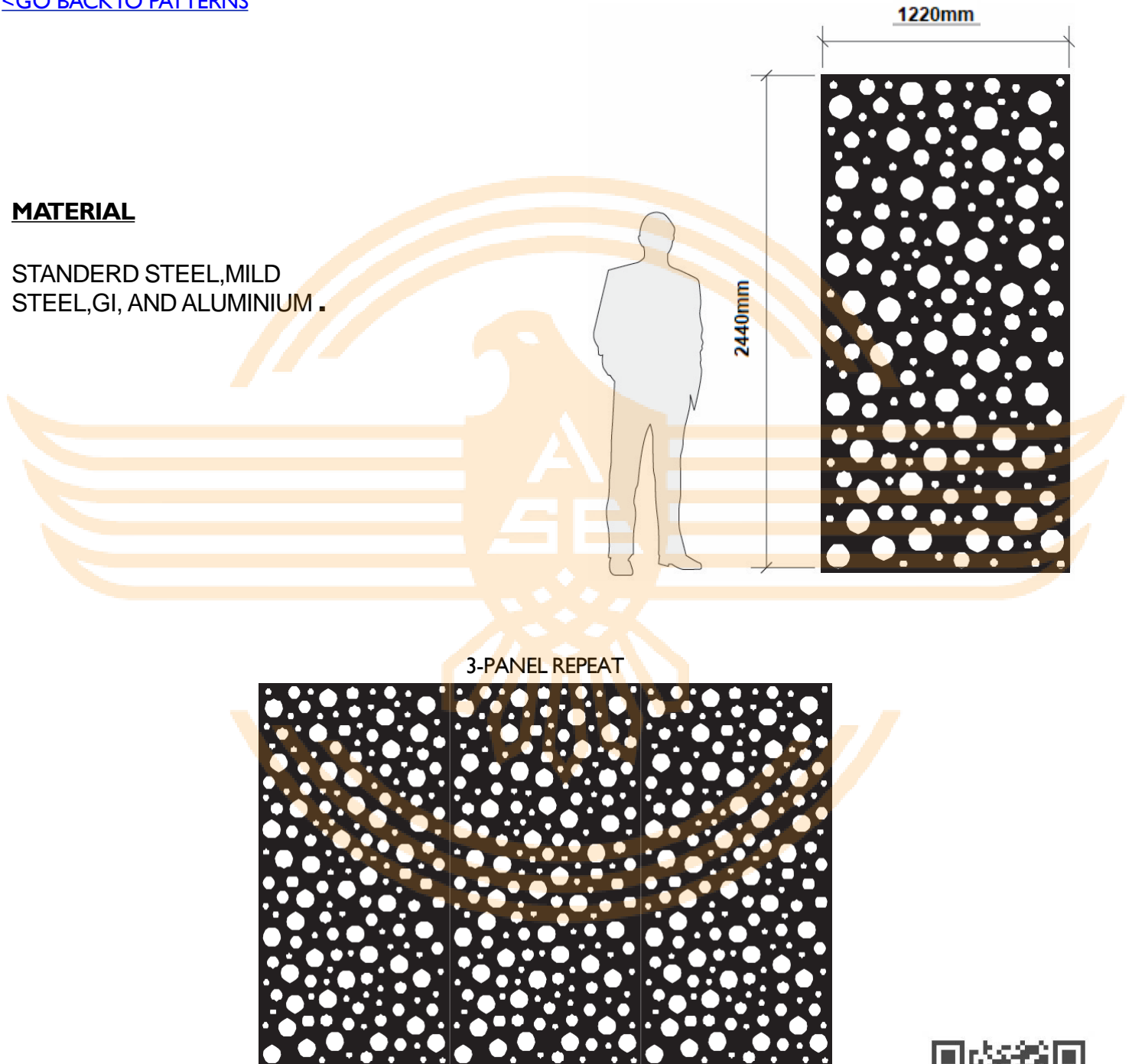


BUBBLES PATTERN

[<GO BACK TO PATTERNS](#)

MATERIAL

STANDERD STEEL, MILD
STEEL, GI, AND ALUMINIUM .



PEBBLES PATTERN

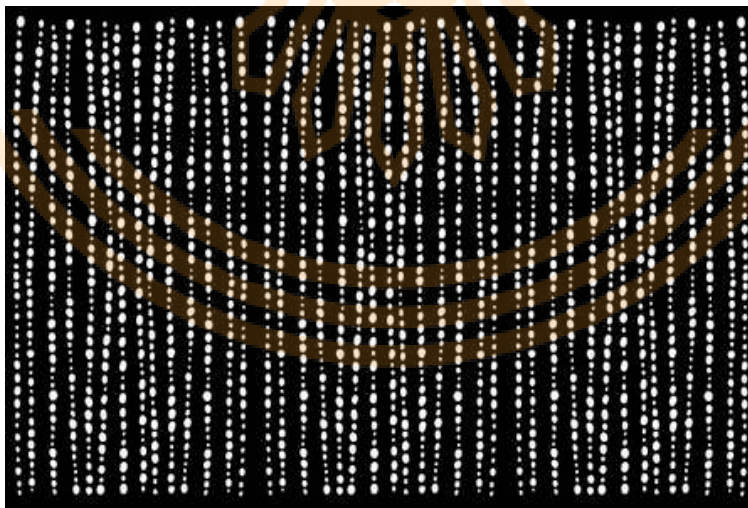
[<GO BACK TO PATTERNS](#)

MATERIAL

STANDARD STEEL, MILD
STEEL, GI, AND ALUMINIUM .



3-PANEL REPEAT

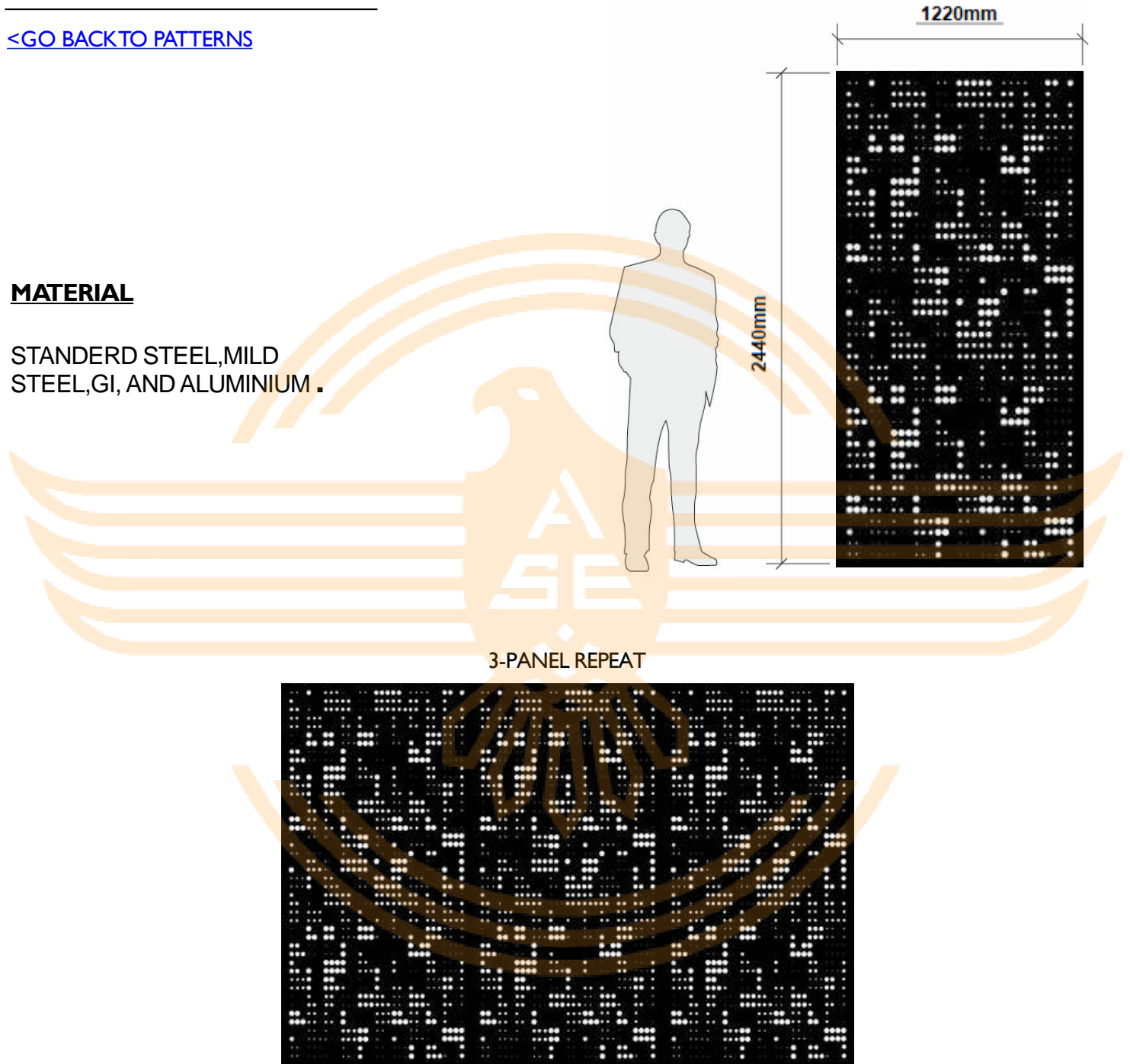


SKYLINE PATTERN

[<GO BACK TO PATTERNS](#)

MATERIAL

STANDERD STEEL, MILD
STEEL, GI, AND ALUMINIUM .

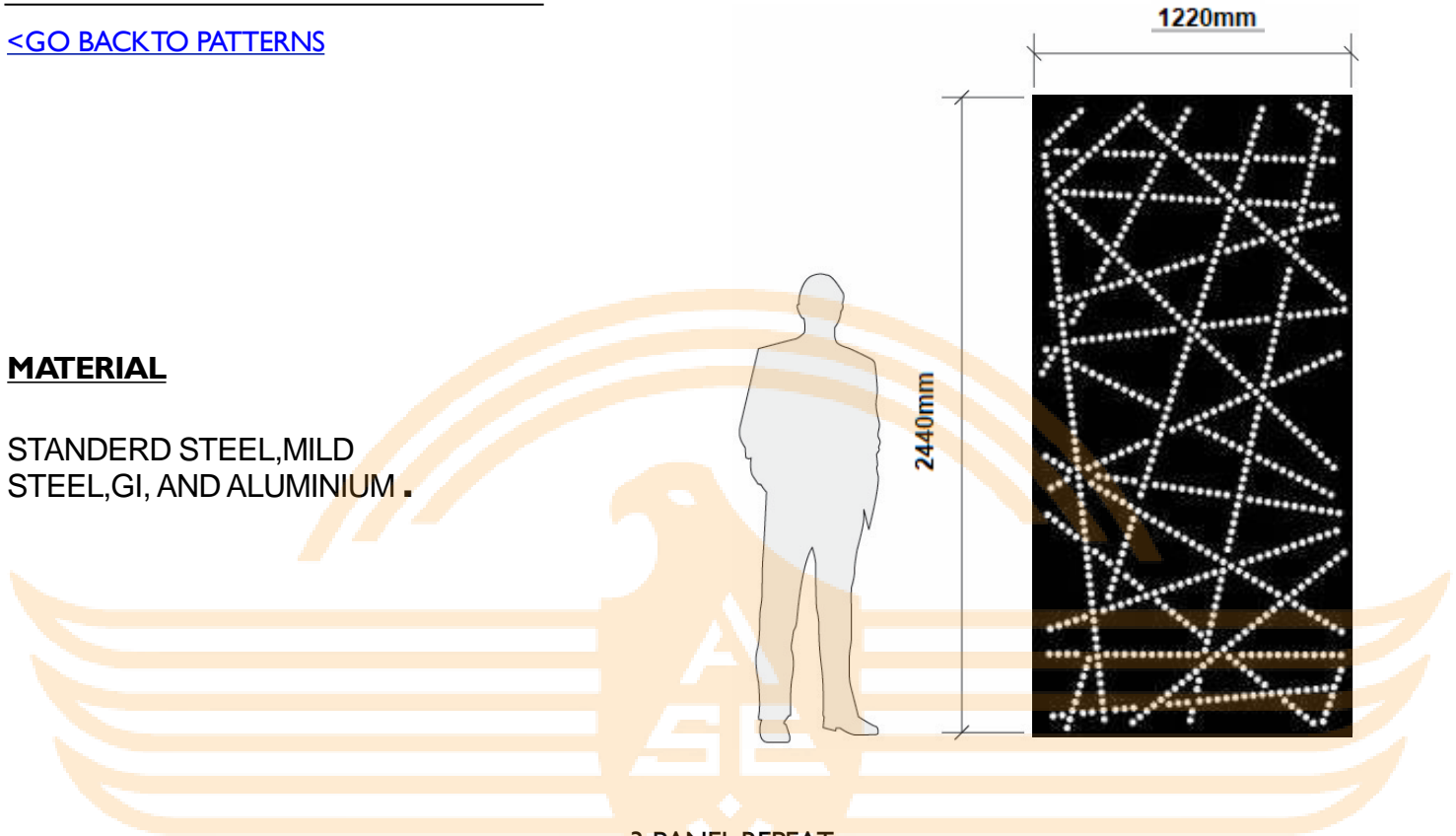


CONTRAILS PATTERN

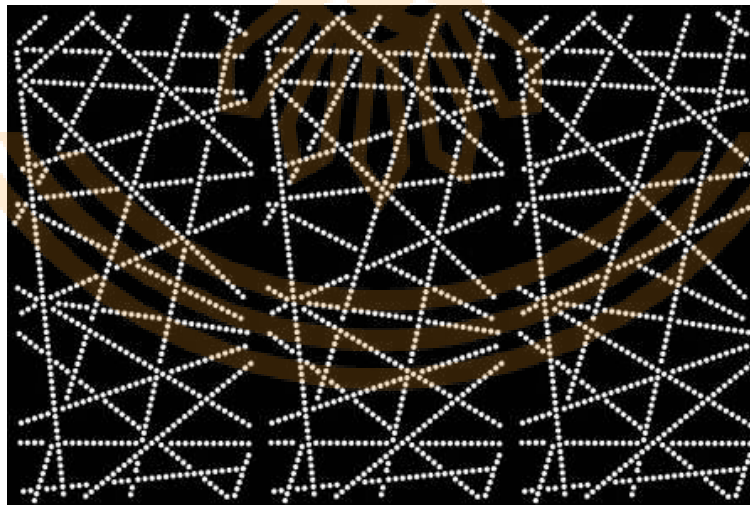
[<GO BACK TO PATTERNS](#)

MATERIAL

STANDERD STEEL, MILD
STEEL, GI, AND ALUMINIUM .



3-PANEL REPEAT

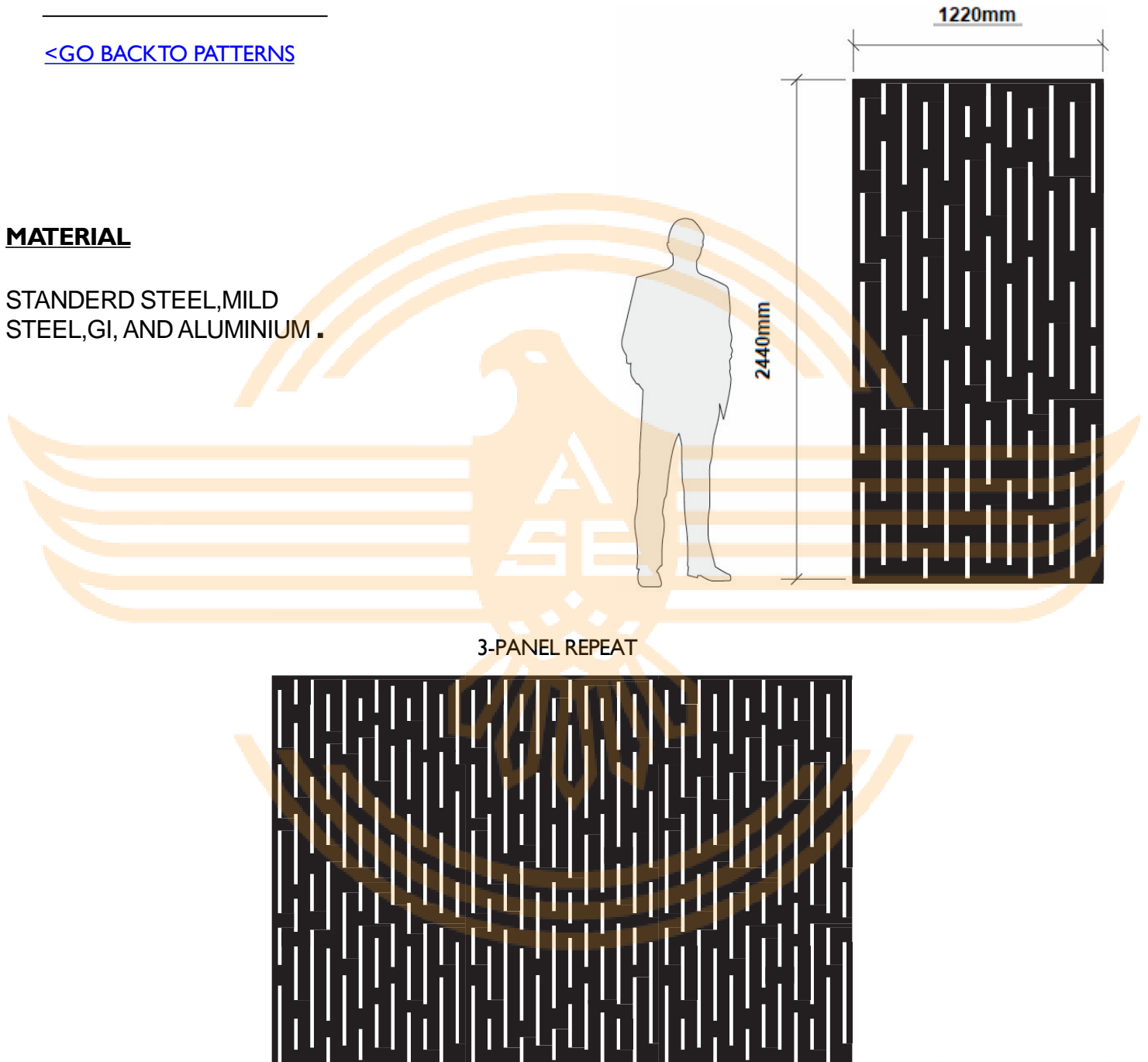


LINES PATTERN

[<GO BACK TO PATTERNS](#)

MATERIAL

STANDERD STEEL, MILD
STEEL, GI, AND ALUMINIUM .

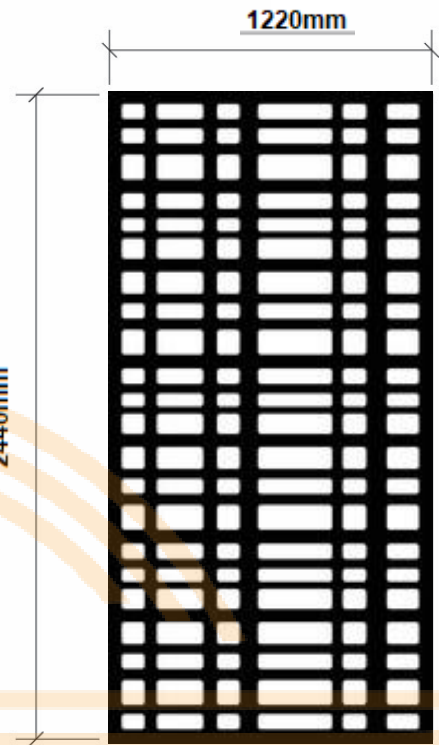


SHOJI PATTERN

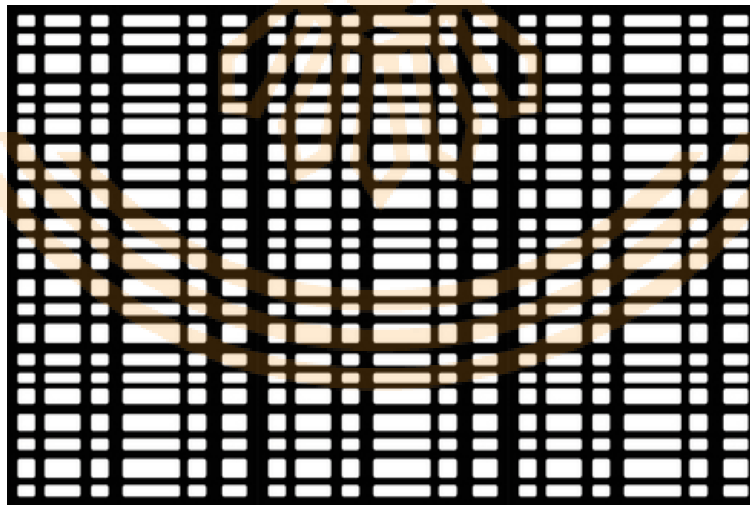
[<GO BACK TO PATTERNS](#)

MATERIAL

STANDERD STEEL, MILD
STEEL, GI, AND ALUMINIUM .



3-PANEL REPEAT



CARTE PATTERN

[<GO BACK TO PATTERNS](#)

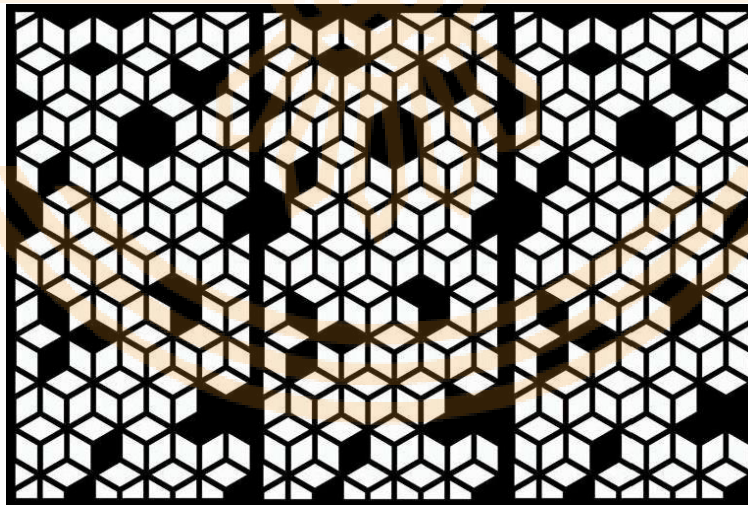
MATERIAL

STANDERD STEEL, MILD
STEEL, GI, AND ALUMINIUM .

1220mm

2440mm

3 PANEL REPEAT

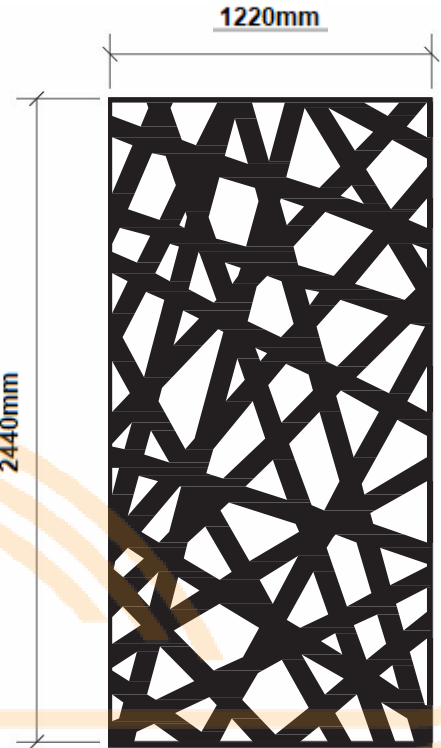


CRISSCROSS PATTERN

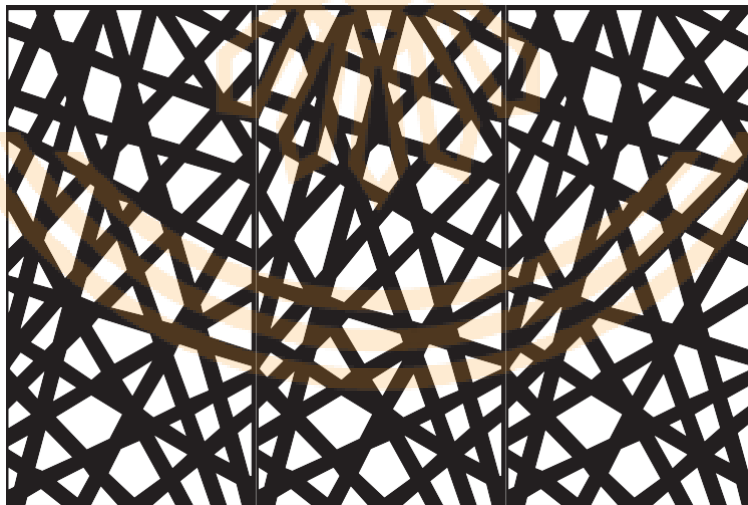
[<GO BACK TO PATTERNS](#)

MATERIAL

STANDERD STEEL, MILD
STEEL, GI, AND ALUMINIUM .



3-PANEL REPEAT



VITRAL PATTERN

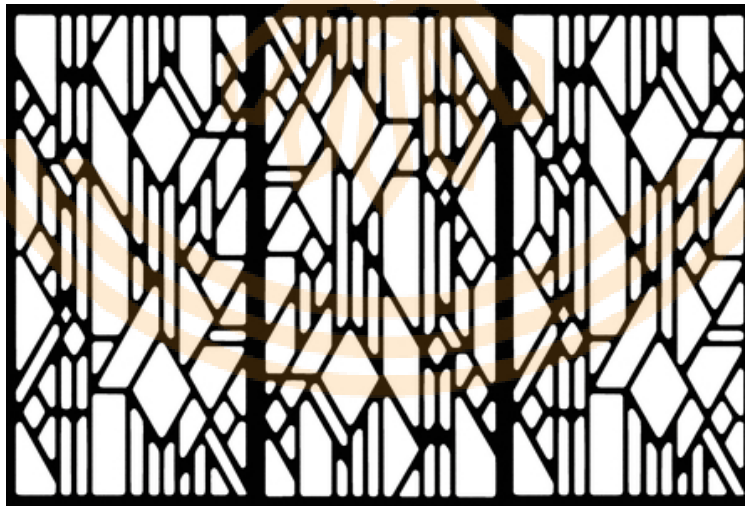
[<GO BACK TO PATTERNS](#)

MATERIAL

STANDERD STEEL, MILD
STEEL, GI, AND ALUMINIUM .



3 PANELS WITH CENTER PANEL ROTATED 180 DEGREES

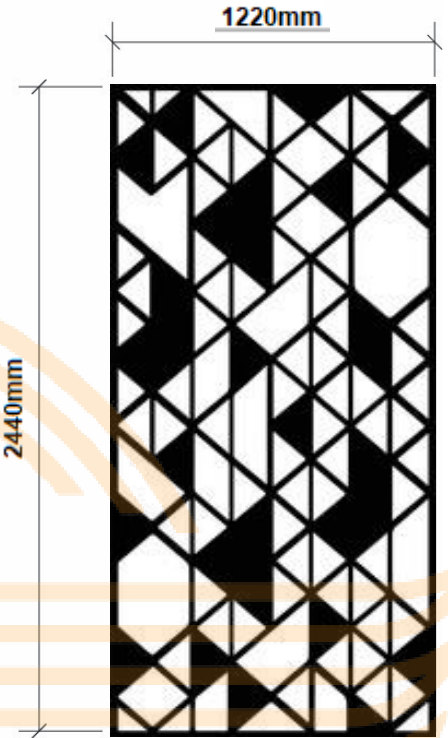


DECO PATTERN

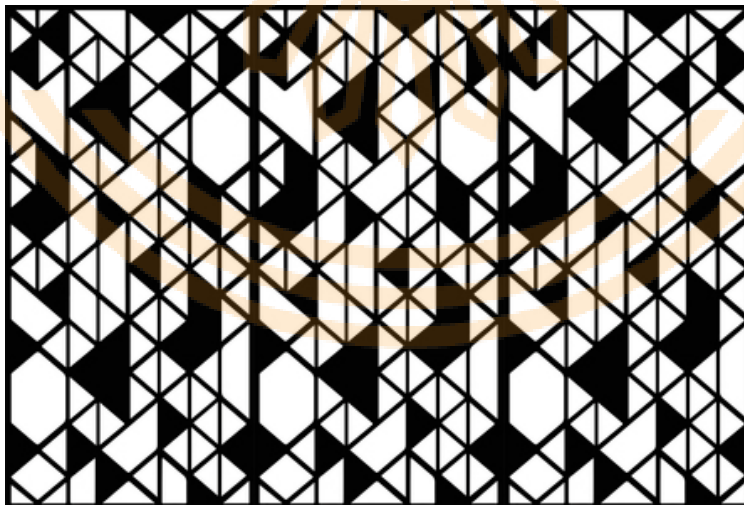
[<GO BACK TO PATTERNS](#)

MATERIAL

STANDERD STEEL, MILD
STEEL, GI, AND ALUMINIUM .



3-PANEL REPEAT

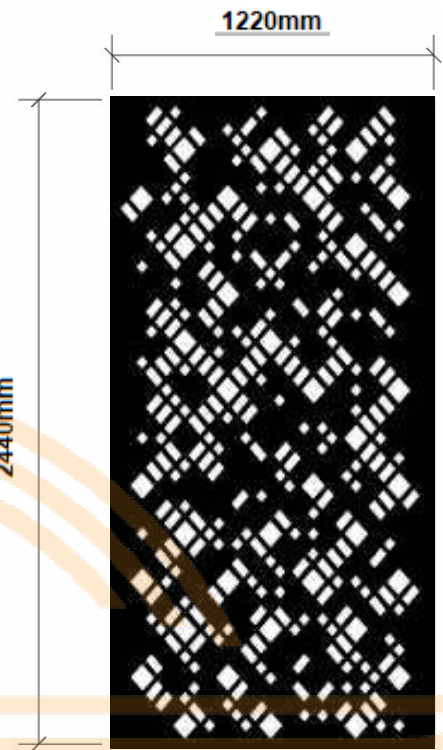


METRO PATTERN

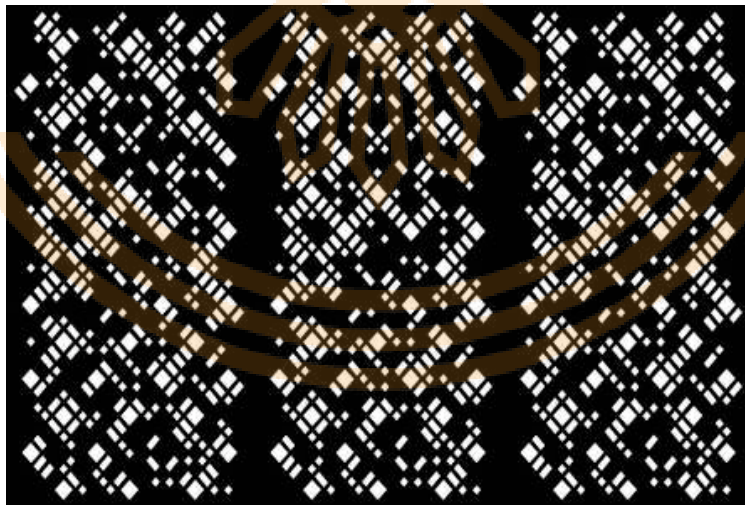
[<GO BACK TO PATTERNS](#)

MATERIAL

STANDERD STEEL, MILD
STEEL, GI, AND ALUMINIUM .



3-PANEL REPEAT

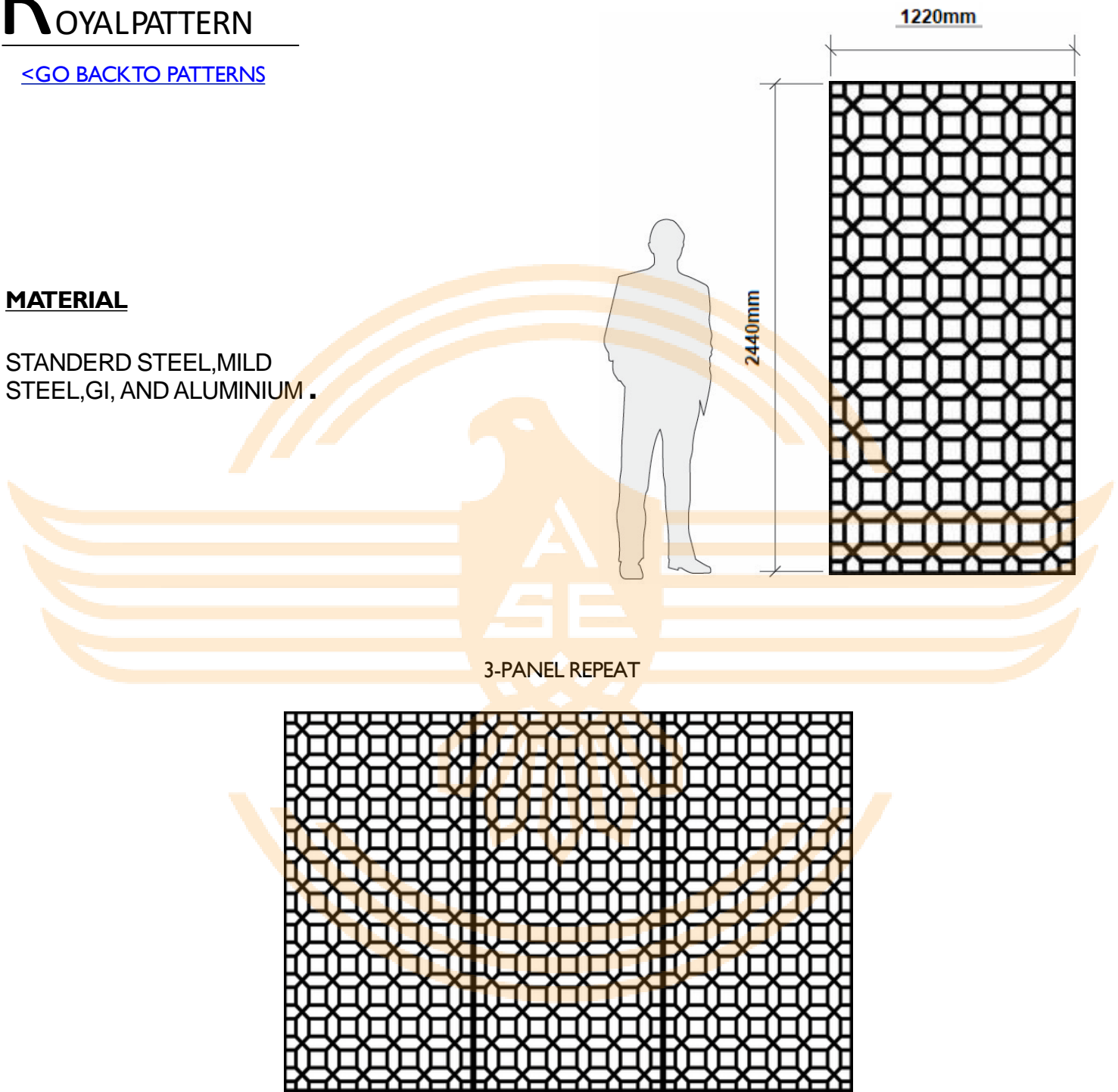


RoyalPattern

[<GO BACK TO PATTERNS](#)

MATERIAL

STANDERD STEEL, MILD
STEEL, GI, AND ALUMINIUM .

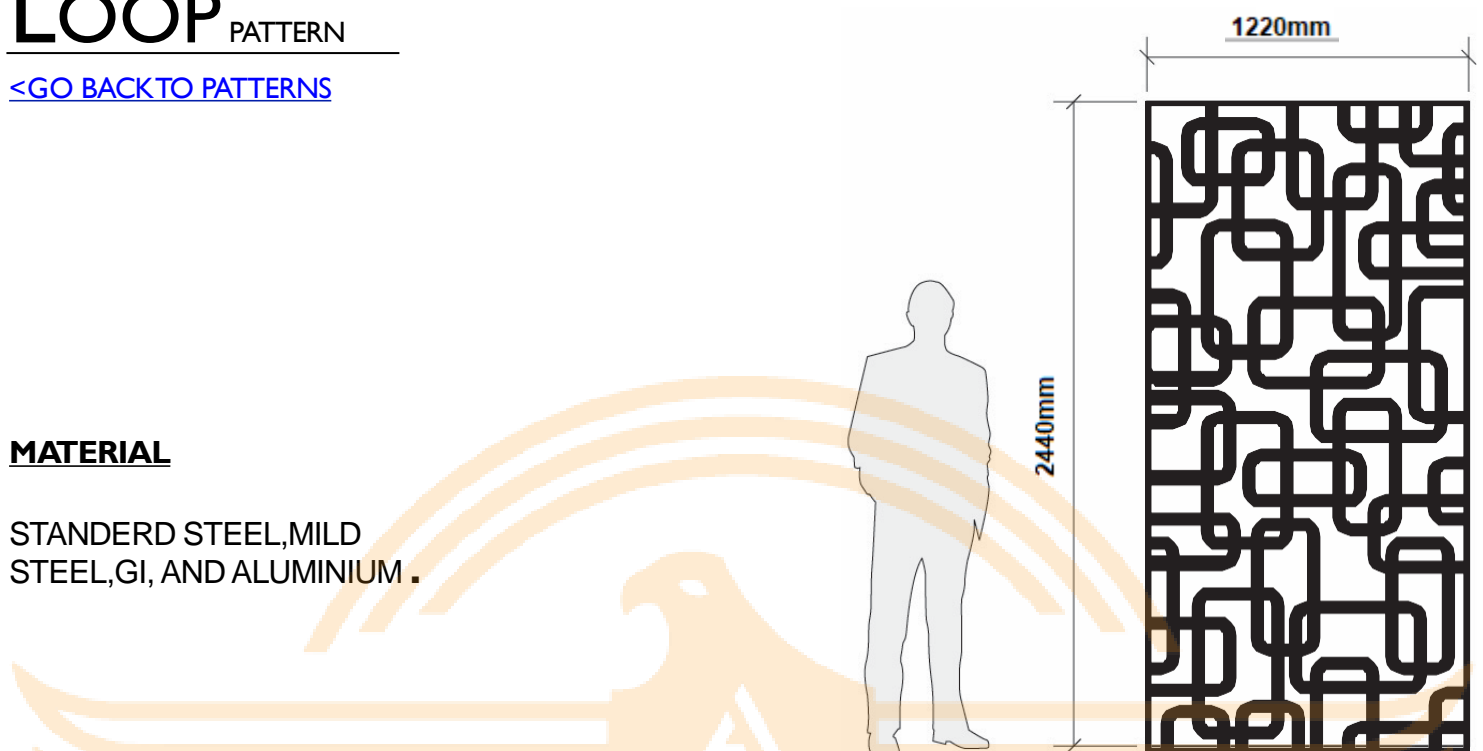


LOOP PATTERN

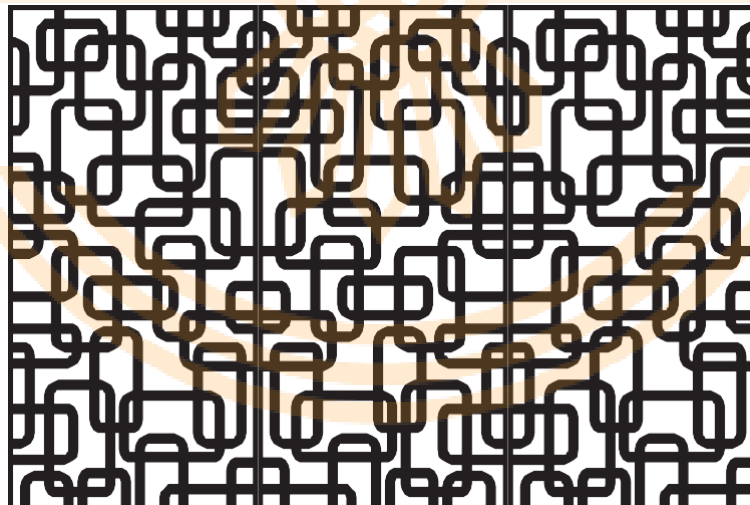
[<GO BACK TO PATTERNS](#)

MATERIAL

STANDERD STEEL, MILD
STEEL, GI, AND ALUMINIUM .



3 PANELS WITH CENTER PANEL FLIPPED LEFT TO RIGHT

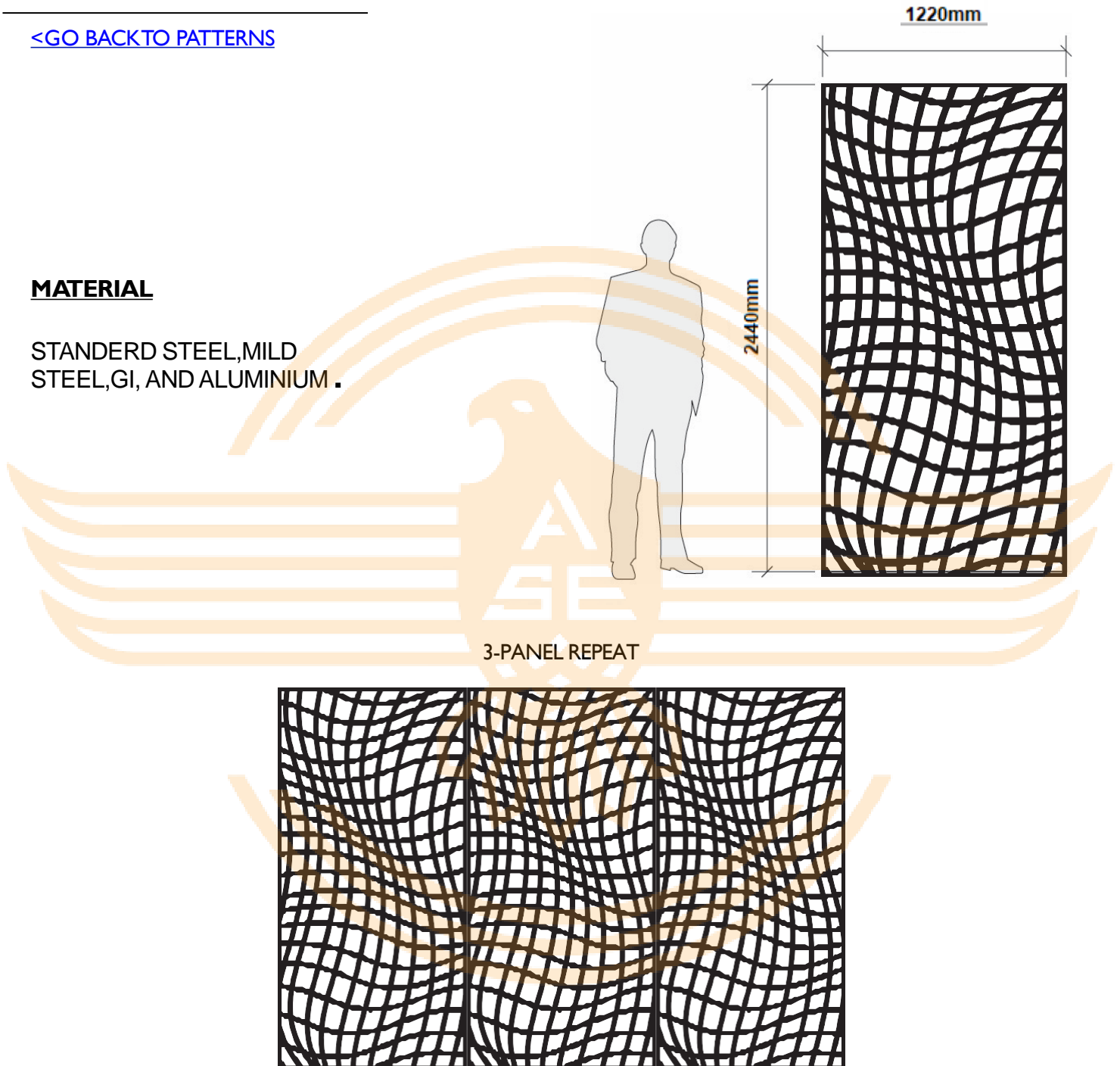


NETTING PATTERN

[<GO BACK TO PATTERNS](#)

MATERIAL

STANDERD STEEL, MILD
STEEL, GI, AND ALUMINIUM .

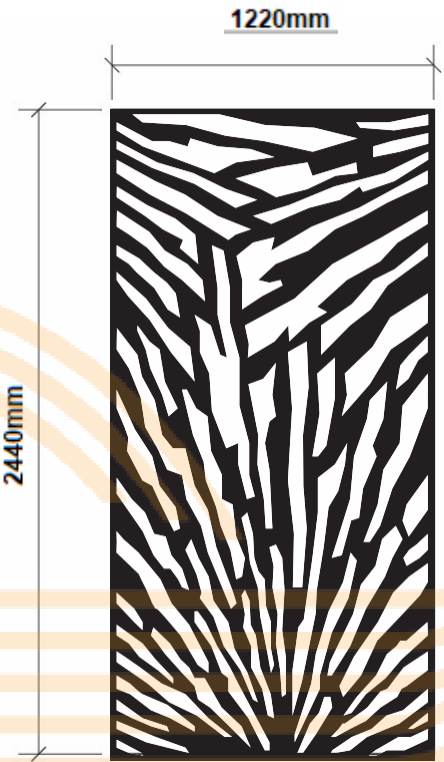


SHATTERED PATTERN

[<GO BACK TO PATTERNS](#)

MATERIAL

STANDERD STEEL, MILD
STEEL, GI, AND ALUMINIUM .



3 PANELS WITH CENTER PANEL ROTATED 180 DEGREES

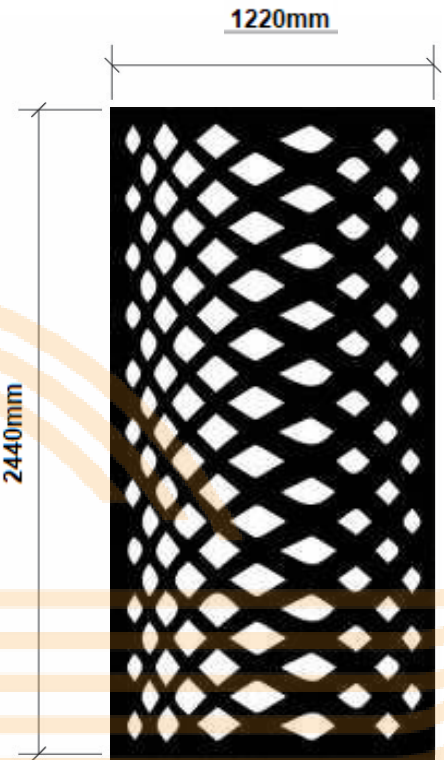


RHYTHM PATTERN

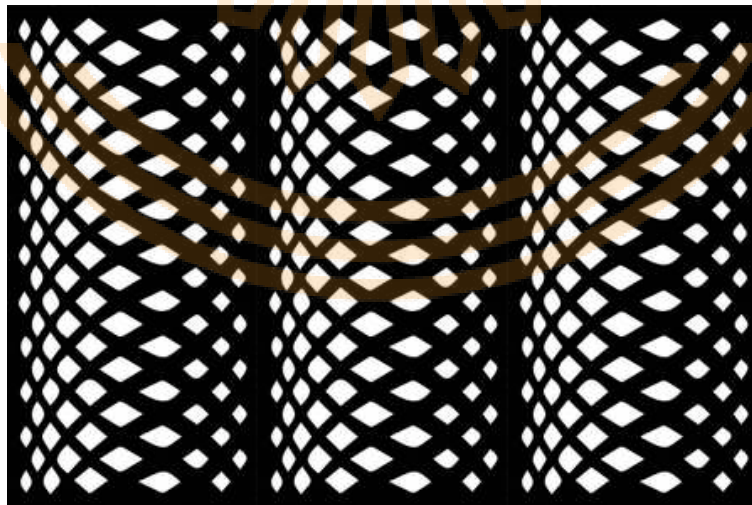
[<GO BACK TO PATTERNS](#)

MATERIAL

STANDERD STEEL, MILD
STEEL, GI, AND ALUMINIUM .

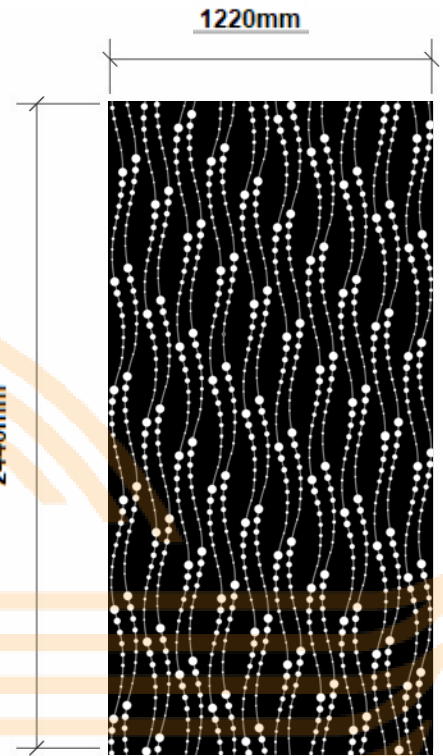


3-PANEL REPEAT



PEARLS PATTERN

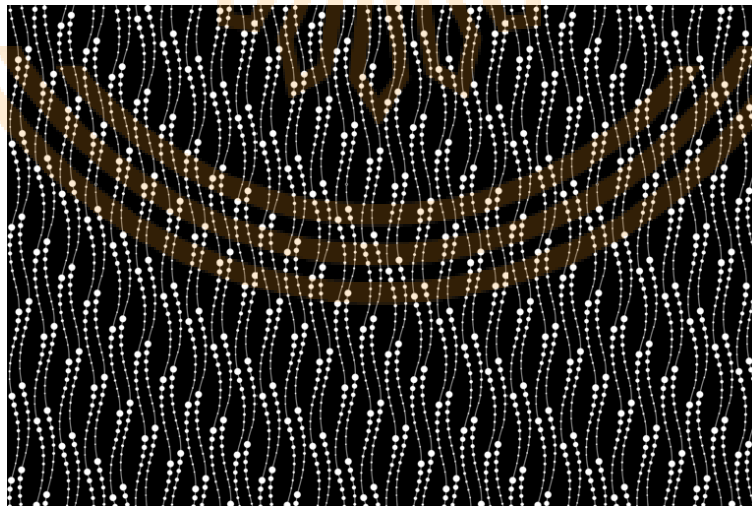
[<GO BACK TO PATTERNS](#)



MATERIAL

STANDERD STEEL, MILD
STEEL, GI, AND ALUMINIUM .

3-PANEL REPEAT

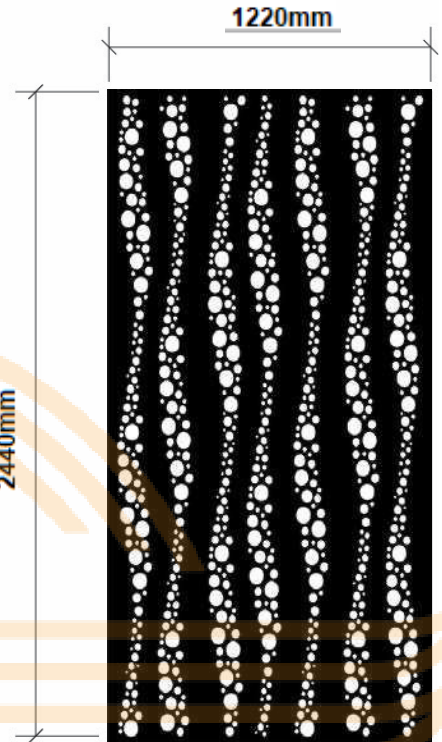


STREAM PATTERN

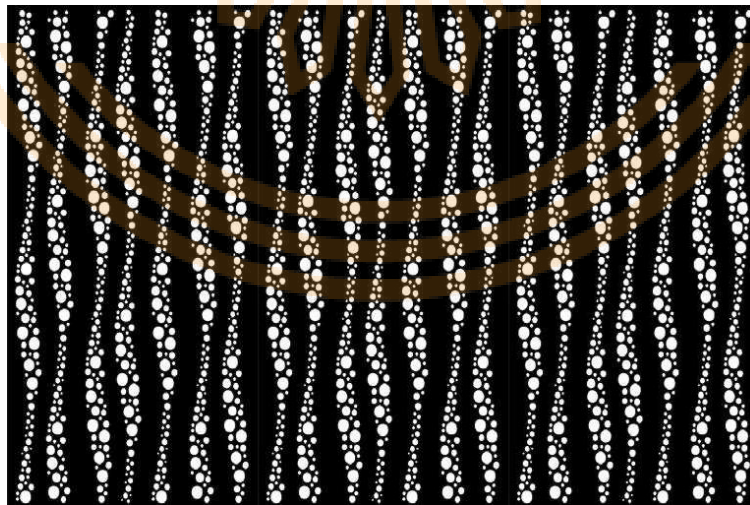
[<GO BACK TO PATTERNS](#)

MATERIAL

STANDERD STEEL, MILD
STEEL, GI, AND ALUMINIUM .



3-PANEL REPEAT

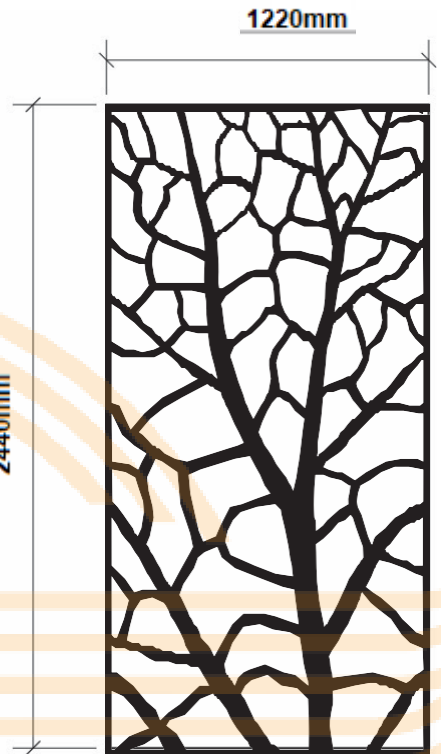


TREE PATTERN

[<GO BACK TO PATTERNS](#)

MATERIAL

STANDERD STEEL, MILD
STEEL, GI, AND ALUMINIUM .



3-PANEL REPEAT



TROPICAL PATTERN

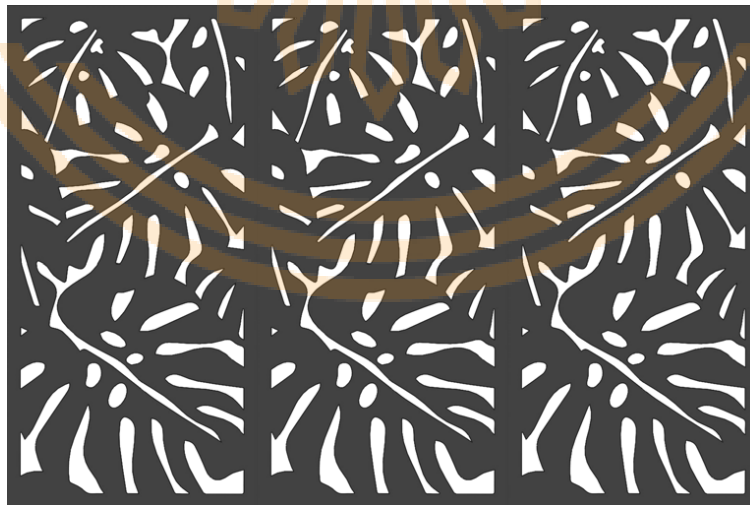
[<GO BACK TO PATTERNS](#)

MATERIAL

STANDERD STEEL, MILD
STEEL, GI, AND ALUMINIUM .



3-PANEL REPEAT

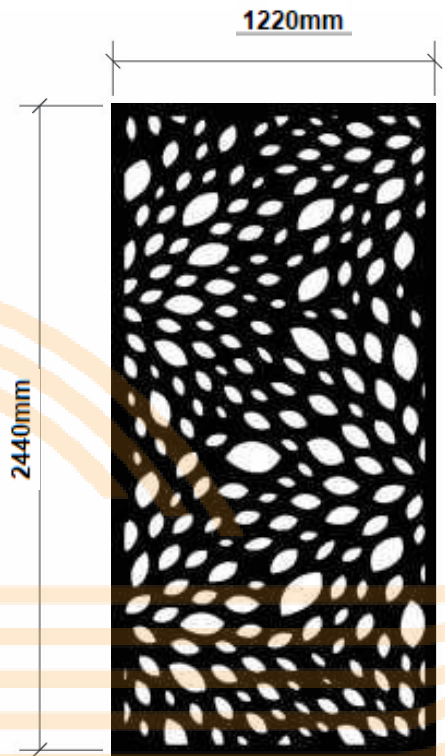


PETALS PATTERN

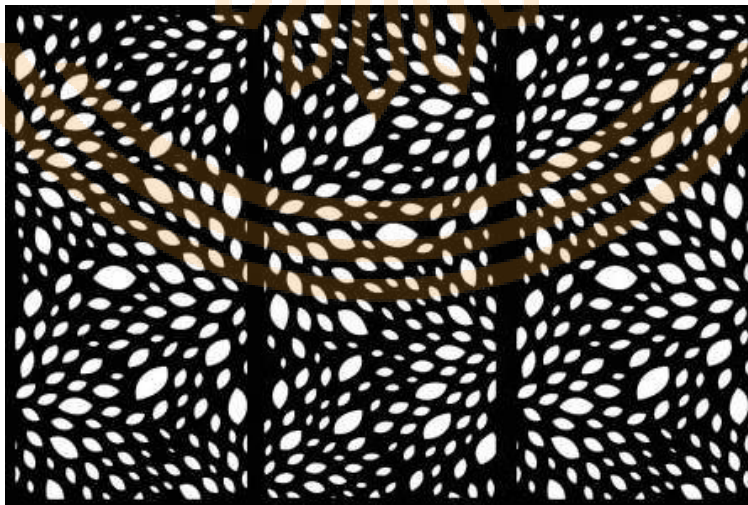
[<GO BACK TO PATTERNS](#)

MATERIAL

STANDERD STEEL, MILD
STEEL, GI, AND ALUMINIUM .



3 PANELS WITH CENTER PANEL ROTATED 180 DEGREES

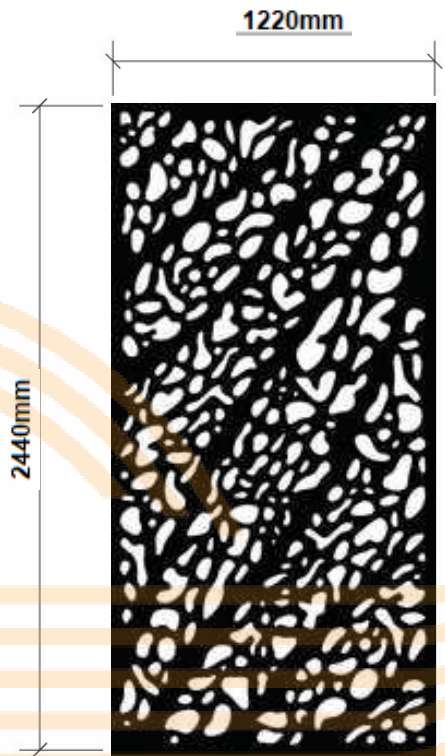


VINES PATTERN

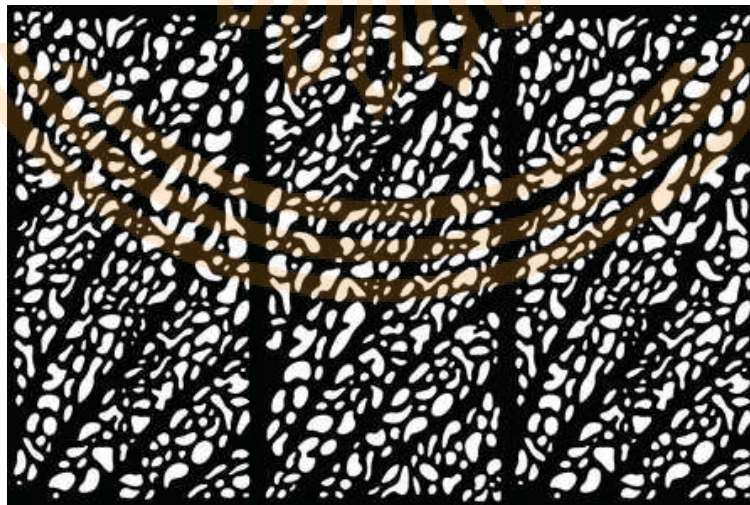
[<GO BACK TO PATTERNS](#)

MATERIAL

STANDERD STEEL, MILD
STEEL, GI, AND ALUMINIUM .



3 PANELS WITH CENTER PANEL ROTATED 180 DEGREES

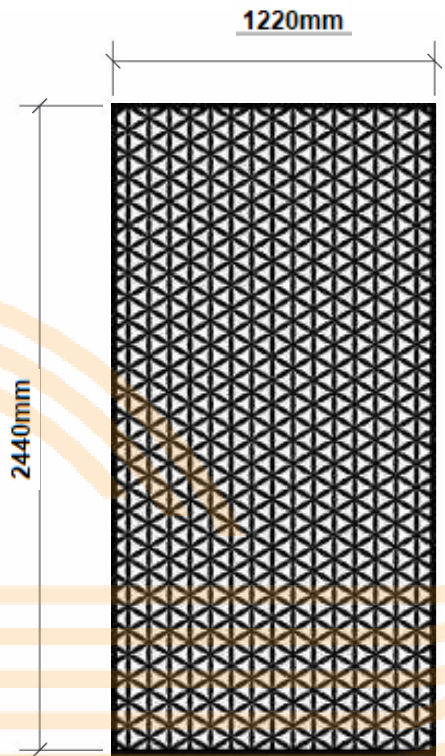


TRINITY PATTERN

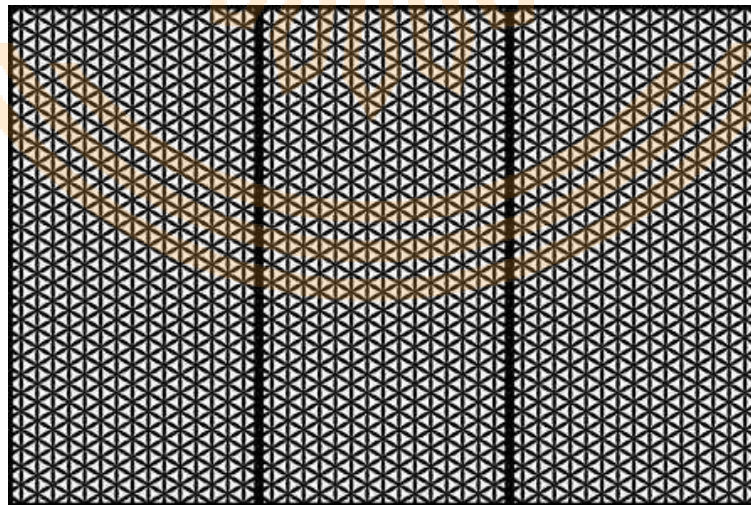
[<GO BACK TO PATTERNS](#)

MATERIAL

STANDARD STEEL, MILD
STEEL, GI, AND ALUMINIUM .



3-PANEL REPEAT



PALM PATTERN

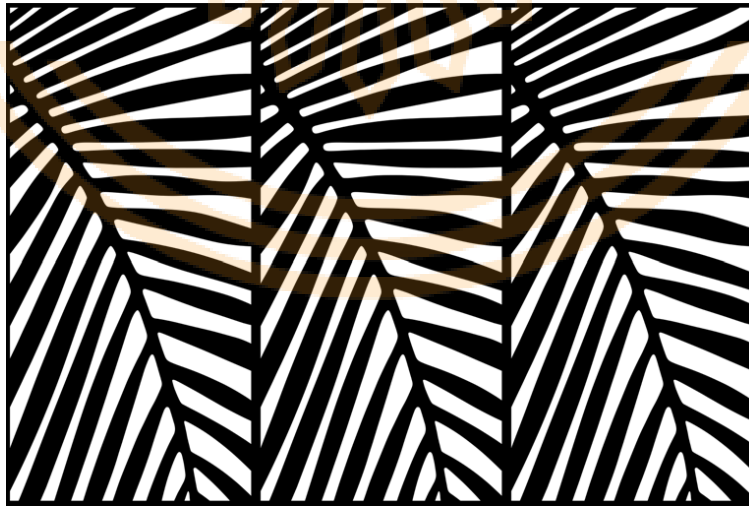
[<GO BACK TO PATTERNS](#)

MATERIAL

STANDERD STEEL, MILD
STEEL, GI, AND ALUMINIUM .



3-PANEL REPEAT

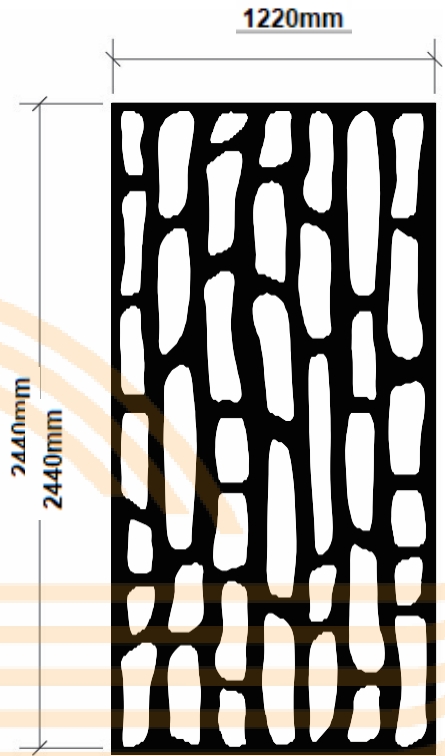


FLINTSTONES PATTERN

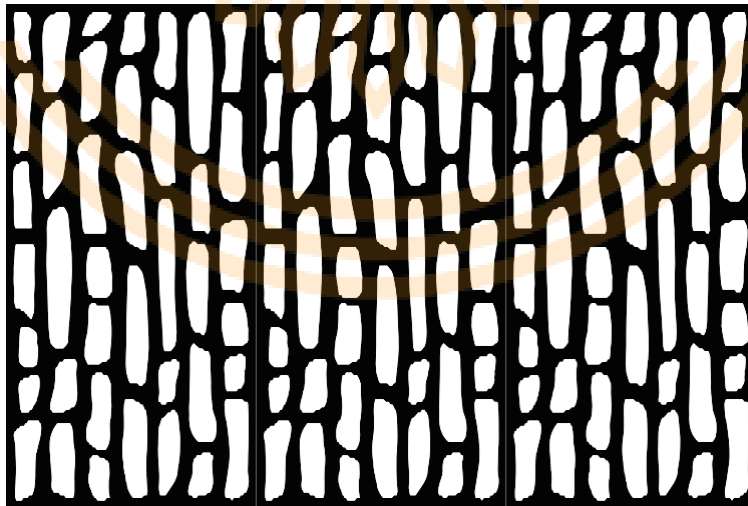
[<GO BACK TO PATTERNS](#)

MATERIAL

STANDERD STEEL, MILD
STEEL, GI, AND ALUMINIUM .



3-PANEL REPEAT

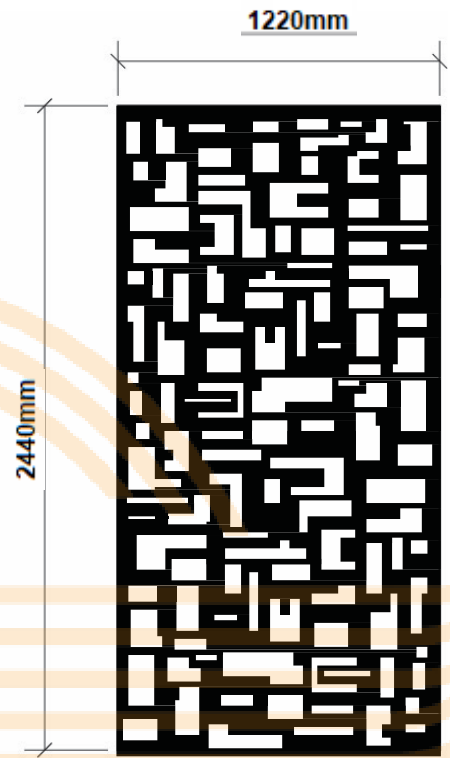


TICTAC PATTERN

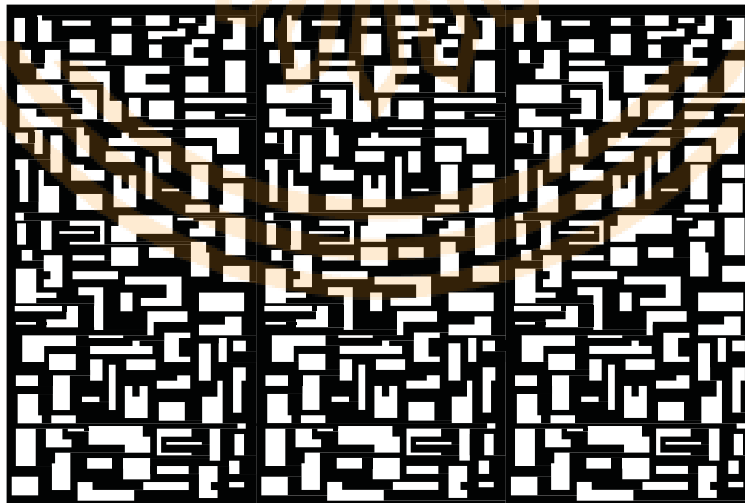
[<GO BACK TO PATTERNS](#)

MATERIAL

STANDERD STEEL, MILD
STEEL, GI, AND ALUMINIUM .



3-PANEL REPEAT

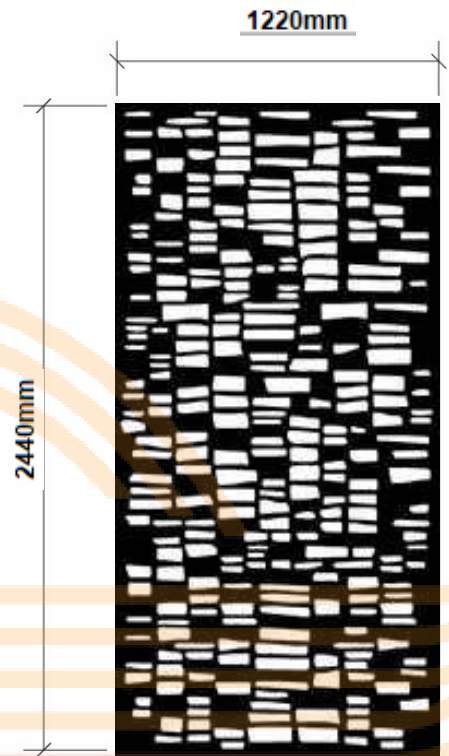


LIMESTONE PATTERN

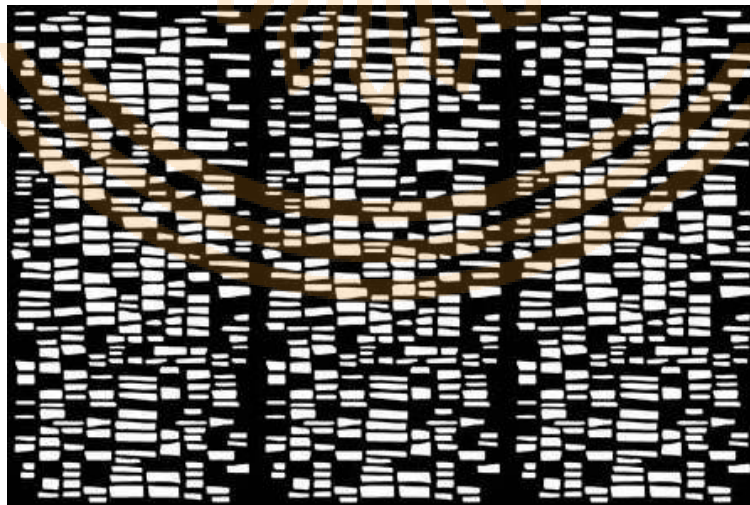
[<GO BACK TO PATTERNS](#)

MATERIAL

STANDERD STEEL, MILD
STEEL, GI, AND ALUMINIUM .



3-PANEL REPEAT

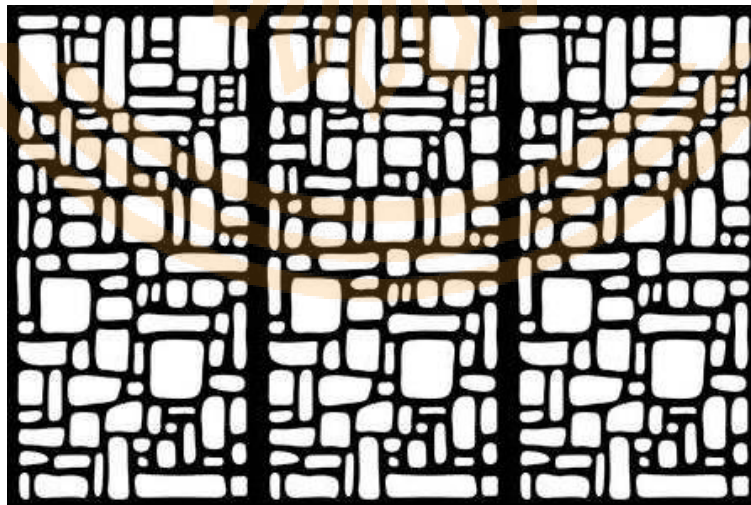
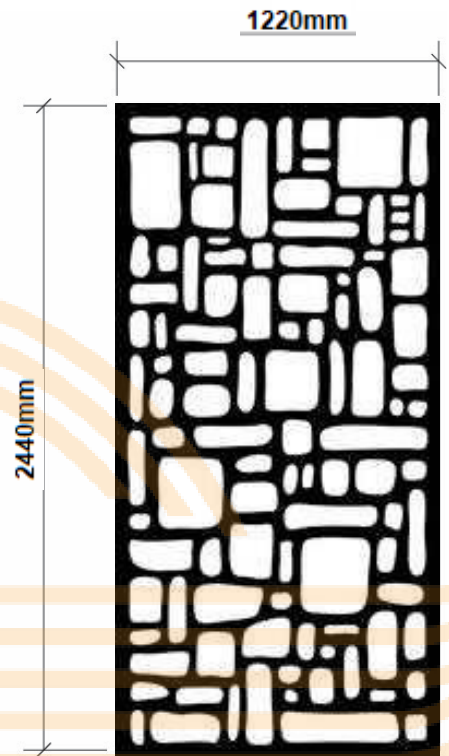


COBBLESTONE PATTERN

[<GO BACK TO PATTERNS](#)

MATERIAL

STANDERD STEEL, MILD
STEEL, GI, AND ALUMINIUM .





AL SAMEER GROUP

MAIN OFFICE

AL SAMEER ENGINEERING LLC

+971 50 7002 058 | +971 50 700 3953 |

info@alsameereng.com

Al Sameer Engineering llc Umm Al Quwain

AL SAMEER MULTITECH SOLUTION

+971 50 7002 058 | +971 50 700 3953 |

info@alsameereng.com

Al Sameer MultiTech Solution - Ajman

PAK ENGINEERING

+92 321 9555 777 | +92 3004491065 |

info@pakengineer.pk.com

I Block, Gulshan Ravi, Band Road, Industrial Area, Lahore - Pakistan

www.alsameereng.com

